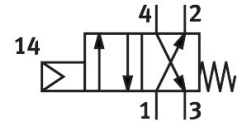


# Front panel valve SVS-4-1/8

Part number: 10192

FESTO



 [General operating condition](#)

## Data sheet

Feature	Value
Valve function	4/2-way, monostable
Type of actuation	Mechanical
Standard nominal flow rate (standardised to DIN 1343)	120 l/min
pneumatic working port	G1/8
Operating pressure	0.35 MPa ... 0.8 MPa
Operating pressure	3.5 bar ... 8 bar
Design	Piston seat
Type of reset	Mechanical spring
Sealing principle	Soft
Mounting position	optional
Type of piloting	Direct
Flow direction	Non-reversible
Symbol	00991108
Explosion protection	Zone 1 (ATEX) Zone 2 (ATEX) Zone 21 (ATEX) Zone 22 (ATEX)
Operating medium	Compressed air to ISO 8573-1:2010 [---:--]
LABS (PWIS) conformity	VDMA24364-B1/B2-L
Ambient temperature	-10 °C ... 60 °C
Actuating force	8 N
Type of mounting	With through-hole
Pneumatic connection, port 1	G1/8
Pneumatic connection, port 2	G1/8
Pneumatic connection, port 3	G1/8
Pneumatic connection, port 4	G1/8
Material cover	POM
Material seals	NBR TPE-U(PU)
Material housing	Aluminium