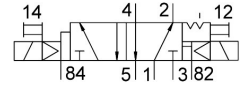
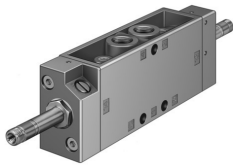


# Solenoid valve

## JMFDH-5-1/4

Part number: 10411

FESTO



 General operating condition

## Data sheet

| Feature   | Value  |
|---|--|
| Valve function  | 5/2-way, bistable, dominant  |
| Type of actuation                                     | Electric   |
| Construction width                                    | 30.5 mm  |
| Standard nominal flow rate (standardised to DIN 1343) | 1100 l/min   |
| pneumatic working port                                | G1/4   |
| Operating voltage                                     | Via solenoid coil, must be ordered separately  |
| Operating pressure                                    | 0.25 MPa ... 0.8 MPa   |
| Operating pressure                                    | 2.5 bar ... 8 bar  |
| Design  | Poppet seat  |
| Approval  | c UL us - Recognized (OL)  |
| Degree of protection                                  | IP65   |
| Nominal size  | 7 mm   |
| Grid dimension  | 32 mm  |
| Exhaust-air function                                  | With flow control option   |
| Sealing principle                                     | Soft   |
| Mounting position                                     | optional   |
| Manual override                                       | Detenting  |
| Type of piloting                                      | Pilot actuated   |
| Flow direction  | Non-reversible   |
| Symbol  | 00995980   |
| lap   | Underlap   |
| Max. switching frequency                              | 16 Hz  |
| Switching time reversal                               | 16 ms  |
| Max. positive test pulse with 0 signal                | 2200 µs  |
| Max. negative test pulse with 1 signal                | 3700 µs  |
| Characteristic coil data                              | See solenoid coil, to be ordered separately  |
| Operating medium                                      | Compressed air to ISO 8573-1:2010 [7:4:4]  |
| Note on operating and pilot medium                    | Lubricated operation possible (in which case lubricated operation will always be required) |
| Corrosion resistance class CRC                        | 1 - Low corrosion stress   |
| LABS (PWIS) conformity                                | VDMA24364-B1/B2-L  |
| Storage temperature                                   | -20 °C ... 60 °C   |
| Media temperature                                     | -10 °C ... 60 °C   |
| Ambient temperature                                   | -5 °C ... 40 °C  |
| Product weight  | 530 g  |
| Electrical connection                                 | Via F coil, to be ordered separately   |

| <b>Feature</b>               | <b>Value</b>                                     |
|------------------------------|--|
| Type of mounting             | Either:<br>On manifold rail<br>With through-hole |
| Pilot exhaust port 82        | M5   |
| Pilot exhaust port 84        | M5   |
| Pneumatic connection, port 1 | G1/4   |
| Pneumatic connection, port 2 | G1/4   |
| Pneumatic connection, port 3 | G1/4   |
| Pneumatic connection, port 4 | G1/4   |
| Pneumatic connection, port 5 | G1/4   |
| Note on materials            | RoHS-compliant                                   |
| Material seals               | NBR<br>TPE-U(PU)                                 |
| Material housing             | Die-cast aluminium                               |