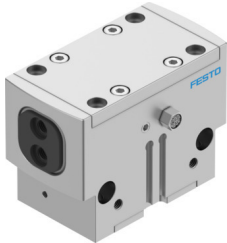


Parallel gripper HGPD-35-A

Part number: 1132945

FESTO



[PDF](#) General operating condition

Data sheet

Feature	Value
Size	35
Stroke per gripper jaws	8 mm
Max. replacement accuracy	≤0.2 mm
Max. angular gripper jaw backlash ax, ay	≤0.1 deg
Max. gripper jaw backlash Sz	≤0.02 mm
Rotationally symmetrical	≤0.2 mm
Repetition accuracy, gripper	≤0.05 mm
Number of gripper jaws	2
Drive system	Pneumatic
Mounting position	optional
Mode of operation	Double-acting
Gripper function	Parallel
Gripper force back-up	None
Design	Force pilot operated motion sequence
Position detection	Via proximity switch
Symbol	00991894
Operating pressure	3 bar ... 8 bar
Operating pressure of blocked air	0 bar ... 0.5 bar
Max. operating frequency of gripper	≤3 Hz
Min. opening time at 0.6 MPa (6 bar, 87 psi)	33 ms
Min. closing time at 0.6 MPa (6 bar, 87 psi)	37 ms
Max. mass per external gripper finger	278 g
Operating medium	Compressed air to ISO 8573-1:2010 [7:4:4]
Note on operating and pilot medium	Lubricated operation possible (in which case lubricated operation will always be required)
Corrosion resistance class CRC	2 - Moderate corrosion stress
LABS (PWIS) conformity	VDMA24364-B2-L
Degree of protection	IP65
Ambient temperature	5 °C ... 60 °C
Total gripping force, opening, 0.6MPa (6bar, 87 psi)	581 N
Total gripping force, closing, 0.6MPa (6bar, 87 psi)	534 N
Gripper force per gripper jaw, opening, 0.6 MPa (6 bar, 87 psi)	291 N
Gripper force per gripper jaw, closing, 0.6 MPa (6 bar, 87 psi)	267 N
Mass moment of inertia	3.56 kgcm ²
Max. force on gripper jaw Fz static	750 N

Feature	Value
Max. torque at gripper Mx static	40 Nm
Max. torque at gripper My static	30 Nm
Max. torque at gripper Mz static	25 Nm
Lubrication interval for guide components	5 MioCyc
Product weight	572 g
Type of mounting	Either: Via female thread and centring sleeve Via through-hole and centring sleeve Via through-hole and dowel pin Via female thread and dowel pin
Pneumatic connection, blocked air	M5
Pneumatic connection	M5
Note on materials	RoHS-compliant
Material cover cap	High-alloy stainless steel
Material housing	Anodised aluminium
Material gripper jaws	Hardened steel