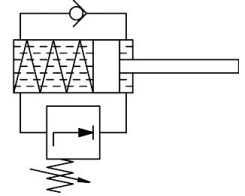


# Shock absorber DYSR-12-12-Y5-T

Part number: 1138643

FESTO



[General operating condition](#)

## Data sheet

| Feature                                | Value                    |
|--|--------------------------|
| Size                                   | 12                       |
| Stroke                                 | 12 mm                    |
| Cushioning                             | Adjustable               |
| Mounting position                      | optional                 |
| Position detection                     | Without                  |
| Symbol                                 | 00995984                 |
| Max. impact speed                      | 3 m/s                    |
| Reset time at room temperature         | 0.2 s                    |
| Reset time at min. ambient temperature | 1 s                      |
| Mode of operation                      | Pushing<br>Single-acting |
| Corrosion resistance class CRC         | 1 - Low corrosion stress |
| LABS (PWIS) conformity                 | VDMA24364-B2-L           |
| Ambient temperature                    | -10 °C ... 80 °C         |
| Cushioning length                      | 12 mm                    |
| Max. stop force                        | 900 N                    |
| Max. energy consumption per stroke     | 10.8 J                   |
| Max. energy consumption per hour       | 60000 J                  |
| Max. residual energy                   | 0.05 J                   |
| Reset force                            | 4.5 N                    |
| Min. insertion force                   | 38 N                     |
| Product weight                         | 120 g                    |
| Load range                             | 90 kg                    |
| Type of mounting                       | Via lock nut             |
| Note on materials                      | RoHS-compliant           |
| Material seals                         | NBR                      |
| Material housing                       | Galvanised steel         |
| Material piston rod                    | High-alloy steel         |