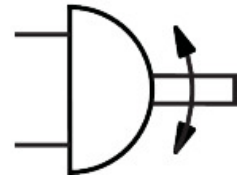
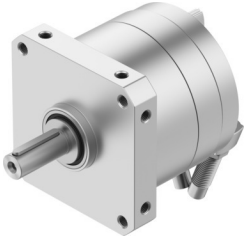


# Semi-rotary drive DSM-T-40-270-CC-A-B

Part number: 1145112

FESTO



 General operating condition

## Data sheet

Feature	Value
Size	40
Cushioning angle	16 deg
Rotation angle adjustment range	0 deg ... 240 deg
Swivel angle	0 deg ... 240 deg
Cushioning	Shock absorber at both ends
Mounting position	optional
Fine adjustment	-3 deg
Mode of operation	Double-acting
Design	Vane
Position detection	Via proximity switch
Symbol	00991265
Operating pressure	0.2 MPa ... 1 MPa
Operating pressure	2 bar ... 10 bar
Max. swivel frequency at 0.6 MPa (6 bar, 87 psi)	0.7 Hz
Operating medium	Compressed air to ISO 8573-1:2010 [7::-]
Corrosion resistance class CRC	0 - No corrosion stress
LABS (PWIS) conformity	VDMA24364-B2-L
Ambient temperature	-10 °C ... 60 °C
Max. axial force	120 N
Max. radial force	350 N
Theoretical torque at 0.6 MPa (6 bar, 87 psi)	40 Nm
Permissible mass moment of inertia	0.11 kgm <sup>2</sup>
Product weight	3970 g
Type of mounting	Via female thread
Pneumatic connection	G1/8
Note on materials	RoHS-compliant
Material drive shaft	Steel Nickel-plated
Material seals	TPE-U(PU)
Material housing	Wrought aluminium alloy