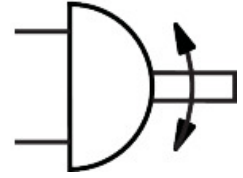
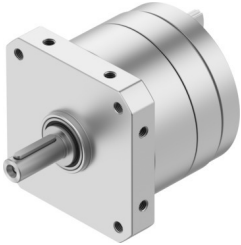


Semi-rotary drive DSM-T-25-270-A-B

Part number: 1145124

FESTO



 General operating condition

Data sheet

| Feature | Value |
|--|---|
| Size | 25 |
| Swivel angle | 0 deg ... 270 deg |
| Mounting position | optional |
| Mode of operation | Double-acting |
| Design | Vane |
| Position detection | Via proximity switch |
| Symbol | 00991265 |
| Operating pressure | 0.2 MPa ... 1 MPa |
| Operating pressure | 2 bar ... 10 bar |
| Max. swivel frequency at 0.6 MPa (6 bar, 87 psi) | 2 Hz |
| Operating medium | Compressed air to ISO 8573-1:2010 [7:-:-] |
| Corrosion resistance class CRC | 0 - No corrosion stress |
| LABS (PWIS) conformity | VDMA24364-B2-L |
| Ambient temperature | -10 °C ... 60 °C |
| Max. axial force | 50 N |
| Max. radial force | 120 N |
| Theoretical torque at 0.6 MPa (6 bar, 87 psi) | 10 Nm |
| Product weight | 890 g |
| Type of mounting | Via female thread |
| Pneumatic connection | M5 |
| Note on materials | RoHS-compliant |
| Material drive shaft | Steel Nickel-plated |
| Material seals | TPE-U(PU) |
| Material housing | Wrought aluminium alloy |