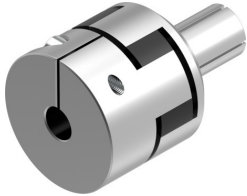


Coupling EAMD-42-40-20-16X25

Part number: 1188350

FESTO



 [General operating condition](#)

Data sheet

Feature	Value
Mounting diameter 1	20 mm
Mounting diameter 2	16 mm
Size	42
Nominal length	40 mm
Mounting position	optional
Max. rotational speed	6000 rpm
LABS (PWIS) conformity	VDMA24364-B2-L
Storage temperature	-25 °C ... 60 °C
Relative air humidity	0 - 95%
Ambient temperature	-25 °C ... 60 °C
Mass moment of inertia	39 kgmm ²
Transmittable torque	17 Nm
Product weight	189 g
Note on materials	RoHS-compliant