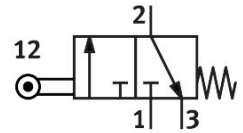


Limit valve SVK-3-PK-3

Part number: 12146

FESTO



[PDF](#) General operating condition

Data sheet

Feature	Value
Valve function	3/2-way, closed, monostable
Type of actuation	Mechanical
Standard nominal flow rate (standardised to DIN 1343)	50 l/min
pneumatic working port	PK-3
Operating pressure	-0.9 bar ... 8 bar
Design	Ball seat
Type of reset	Mechanical spring
Nominal size	1.5 mm
Sealing principle	Soft
Mounting position	optional
Type of piloting	Direct
Flow direction	Non-reversible
Symbol	00991097
Operating medium	Compressed air to ISO 8573-1:2010 [7:4:4]
Note on operating and pilot medium	Lubricated operation possible (in which case lubricated operation will always be required)
LABS (PWIS) conformity	VDMA24364 zone III
Media temperature	-10 °C ... 80 °C
Ambient temperature	-10 °C ... 80 °C
Type of mounting	With through-hole
Pneumatic connection, port 1	PK-3
Pneumatic connection, port 2	PK-3
Pneumatic connection, port 3	Not ducted