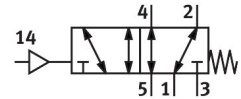


# Pneumatic valve VL-5/2-3/4-D-4

Part number: 12461

FESTO



[PDF](#) General operating condition

## Data sheet

Feature	Value
Valve function	5/2-way, monostable
Type of actuation	Pneumatic
Construction width	76 mm
Standard nominal flow rate (standardised to DIN 1343)	6000 l/min
pneumatic working port	Sub-base size 4 to ISO 5599-1 G3/4
Operating pressure	-0.9 bar ... 16 bar
Design	Piston gate valve
Type of reset	Mechanical spring
Nominal size	18 mm
Grid dimension	82 mm
Exhaust-air function	With flow control option
Sealing principle	Soft
Mounting position	optional
Conforms to standard	ISO 5599-1
Manual override	None
ISO code	404
Type of piloting	Direct
Flow direction	Reversible
Symbol	00991029
lap	Overlap
Pilot pressure	3 bar ... 16 bar
Switching time off	90 ms
Switching time on	25 ms
Operating medium	Compressed air to ISO 8573-1:2010 [7:4:4]
Note on operating and pilot medium	Lubricated operation possible (in which case lubricated operation will always be required)
LABS (PWIS) conformity	VDMA24364-B1/B2-L
Media temperature	-10 °C ... 60 °C
Sound pressure level	85 dB(A)
Pilot medium	Compressed air to ISO 8573-1:2010 [7:4:4]
Ambient temperature	-10 °C ... 60 °C
Product weight	1800 g
Type of mounting	On sub-base Via through-hole and screw
Pilot air port 14	Sub-base size 4 to ISO 5599-1

<b>Feature</b>	<b>Value</b>
Pneumatic connection, port 1	Sub-base size 4 to ISO 5599-1
Pneumatic connection, port 2	Sub-base size 4 to ISO 5599-1
Pneumatic connection, port 3	Sub-base size 4 to ISO 5599-1
Pneumatic connection, port 4	Sub-base size 4 to ISO 5599-1
Pneumatic connection, port 5	Sub-base size 4 to ISO 5599-1
Note on materials	RoHS-compliant
Material seals	NBR
Material housing	Aluminium