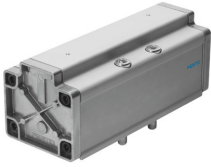


# Pneumatic valve VL-5/3G-3/4-D-4

Part number: 12463

FESTO



[General operating condition](#)

## Data sheet

| Feature   | Value  |
|---|--|
| Valve function  | 5/3 closed   |
| Type of actuation                                     | Pneumatic  |
| Construction width                                    | 76 mm  |
| Standard nominal flow rate (standardised to DIN 1343) | 4800 l/min   |
| pneumatic working port                                | Sub-base size 4 to ISO 5599-1<br>G3/4  |
| Operating pressure                                    | -0.9 bar ... 16 bar  |
| Design  | Piston gate valve  |
| Type of reset   | Mechanical spring  |
| Nominal size  | 18 mm  |
| Grid dimension  | 82 mm  |
| Exhaust-air function                                  | With flow control option   |
| Sealing principle                                     | Soft   |
| Mounting position                                     | optional   |
| Conforms to standard                                  | ISO 5599-1   |
| Manual override                                       | None   |
| ISO code  | 406  |
| Type of piloting                                      | Direct   |
| Flow direction  | Reversible   |
| Symbol  | 00991018   |
| lap   | Overlap  |
| Pilot pressure  | 3 bar ... 16 bar   |
| Switching time off                                    | 130 ms   |
| Switching time on                                     | 40 ms  |
| Operating medium                                      | Compressed air to ISO 8573-1:2010 [7:4:4]  |
| Note on operating and pilot medium                    | Lubricated operation possible (in which case lubricated operation will always be required) |
| LABS (PWIS) conformity                                | VDMA24364-B1/B2-L  |
| Media temperature                                     | -10 °C ... 60 °C   |
| Sound pressure level                                  | 85 dB(A)   |
| Pilot medium  | Compressed air to ISO 8573-1:2010 [7:4:4]  |
| Ambient temperature                                   | -10 °C ... 60 °C   |
| Product weight  | 2000 g   |
| Type of mounting                                      | On sub-base<br>Via through-hole and screw  |
| Pilot air port 12                                     | Sub-base size 4 to ISO 5599-1  |

| <b>Feature</b>               | <b>Value</b>                  |
|------------------------------|-------------------------------|
| Pilot air port 14            | Sub-base size 4 to ISO 5599-1 |
| Pneumatic connection, port 1 | Sub-base size 4 to ISO 5599-1 |
| Pneumatic connection, port 2 | Sub-base size 4 to ISO 5599-1 |
| Pneumatic connection, port 3 | Sub-base size 4 to ISO 5599-1 |
| Pneumatic connection, port 4 | Sub-base size 4 to ISO 5599-1 |
| Pneumatic connection, port 5 | Sub-base size 4 to ISO 5599-1 |
| Note on materials            | RoHS-compliant                |
| Material seals               | NBR                           |
| Material housing             | Aluminium                     |