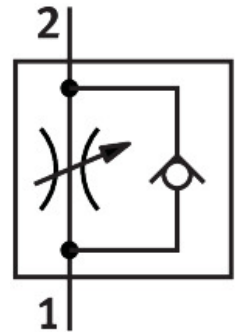


Precision one-way flow control valve GRP-160-PK-4

FESTO

Part number: 12961



 [General operating condition](#)

Data sheet

| Feature | Value |
|---|--|
| Valve function | One-way flow control function |
| Pneumatic connection, port 1 | PK-4 |
| Pneumatic connection, port 2 | PK-4 |
| Type of actuation | Manual |
| Adjustment component | Rotary knob with scale |
| Type of mounting | Front panel mounting |
| Standard nominal flow rate in flow control direction | 75.8 l/min |
| Standard nominal flow rate in blocked direction | 245 l/min |
| Operating pressure | 0 bar ... 8 bar |
| Ambient temperature | -10 °C ... 50 °C |
| Material housing | PA-reinforced |
| Mounting position | optional |
| Symbol | 00991453 |
| Operating pressure from 2 to 1 | 0 bar ... 8 bar |
| Standard nominal flow rate in throttle direction for 0.1->0 MPa (1->0 bar, 14.5->0 psi) | 38 l/min |
| Standard nominal flow rate in return direction for 0.1->0 MPa (1->0 bar, 14.5->0 psi) | 25 l/min ... 90 l/min |
| Standard flow rate in flow control direction 0.6->0 MPa (6->0 bar, 87->0 psi) | 129 l/min |
| Standard flow rate in non-return direction 0.6->0 MPa (6->0 bar, 87->0 psi) | 245 l/min |
| Operating medium | Compressed air to ISO 8573-1:2010 [5:4:3] Inert gases |
| Note on operating and pilot medium | Lubricated operation not possible |
| LABS (PWIS) conformity | VDMA24364 zone III |
| Media temperature | -10 °C ... 50 °C |
| Product weight | 48 g |
| Note on materials | RoHS-compliant |
| Material seals | NBR PVC |

| Feature | Value |
|----------------------------|----------------------------------|
| Material retaining bracket | Wrought aluminium alloy |
| Material PK connections | Wrought aluminium alloy Brass |
| Material screws | Steel |