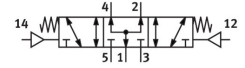


Pneumatic valve VL-5/3B-1/4-B

Part number: 14299

FESTO



[PDF](#) General operating condition

Data sheet

Feature	Value
Valve function	5/3-way, pressurised
Type of actuation	Pneumatic
Construction width	32 mm
Standard nominal flow rate (standardised to DIN 1343)	1600 l/min
pneumatic working port	G1/4
Operating pressure	-0.09 MPa ... 1 MPa
Operating pressure	-0.9 bar ... 10 bar
Design	Piston gate valve
Type of reset	Mechanical spring
Nominal size	10 mm
Grid dimension	33 mm
Exhaust-air function	With flow control option
Sealing principle	Soft
Mounting position	optional
Manual override	None
Type of piloting	Direct
Pilot air supply	External
Flow direction	Reversible
Symbol	00991022
lap	Overlap
Pilot pressure	0.3 MPa ... 1 MPa
Pilot pressure	3 bar ... 10 bar
b value	0.38
C value	6.35 l/sbar
Max. switching frequency	3 Hz
Switching time off	26 ms
Switching time on	6 ms
Switching time reversal	35 ms
Operating medium	Compressed air to ISO 8573-1:2010 [7:4:4]
Note on operating and pilot medium	Lubricated operation possible (in which case lubricated operation will always be required)
Corrosion resistance class CRC	1 - Low corrosion stress
LABS (PWIS) conformity	VDMA24364-B1/B2-L
Storage temperature	-40 °C ... 60 °C
Media temperature	-10 °C ... 60 °C
Pilot medium	Compressed air to ISO 8573-1:2010 [7:4:4]

Feature	Value
Ambient temperature	-10 °C ... 60 °C
Product weight	375 g
Type of mounting	Either: On PR rail With through-hole
Pilot air port 12	G1/8
Pilot air port 14	G1/8
Pneumatic connection, port 1	G1/4
Pneumatic connection, port 2	G1/4
Pneumatic connection, port 3	G1/4
Pneumatic connection, port 4	G1/4
Pneumatic connection, port 5	G1/4
Note on materials	RoHS-compliant
Material seals	NBR
Material housing	Die-cast aluminium