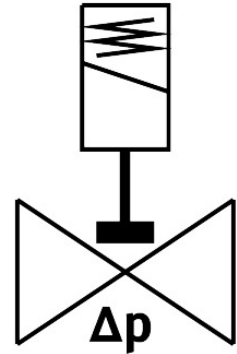


# Solenoid valve

## VZWP-L-M22C-G1-250-V-1P4-40

Part number: 1489949

FESTO



 General operating condition

## Data sheet

Feature	Value
Design	Piloted piston poppet valve
Type of actuation	Electric
Sealing principle	Soft
Mounting position	Coil on top (preferred)
Type of mounting	In-line installation
Connection Process valve	G1
Electrical connection	Type A Plugs To EN 175301-803 Square design
Nominal size	25 mm
Valve function	2/2-way, closed, monostable
Manual override	None
Flow direction	Non-reversible
Medium	Compressed air to ISO 8573-1:2010 [7:4:4] Inert gases Neutral fluids Other media on request
Nominal pressure PN	40
Pressure difference	0.05 MPa
Pressure difference	0.5 bar
Pressure difference	7.25 psi
Characteristic coil data	24 V DC: 6.8 W
Insulation material class	H
Permissible voltage fluctuations	+/- 10 %
Duty cycle	100%
Type of piloting	Pilot actuated
Symbol	00992974
Medium pressure	0.05 MPa ... 4 MPa
Medium pressure	0.5 bar ... 40 bar
Medium pressure	7.25 psi ... 580 psi

Feature	Value
Max. viscosity	22 mm <sup>2</sup> /s
Media temperature	-10 °C ... 80 °C
Ambient temperature	-10 °C ... 35 °C
Leakage rate to EN 12266-1	A
Flow rate Kv	11.5 m <sup>3</sup> /h
Standard nominal flow rate (standardised to DIN 1343)	12250 l/min
Switching time on	130 ms
Switching time off	300 ms
Note on materials	RoHS-compliant
LABS (PWIS) conformity	VDMA24364 zone III
Material housing	Cast brass
Material number housing	CW617N
Material seals	FPM
Material screws	High-alloy stainless steel
Material number screw	1.4301
Product weight	1400 g
Degree of protection	IP65
Corrosion resistance class CRC	1 - Low corrosion stress