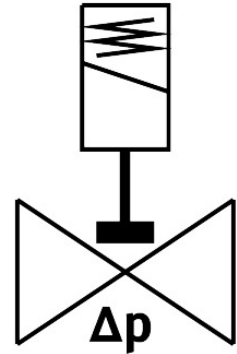


Solenoid valve

VZWP-L-M22C-G1-250-V-2AP4-40

Part number: 1489959

FESTO



 General operating condition

Data sheet

Feature	Value
Design	Piloted piston poppet valve
Type of actuation	Electric
Sealing principle	Soft
Mounting position	Coil on top (preferred)
Type of mounting	In-line installation
Connection Process valve	G1
Electrical connection	Type A Plugs To EN 175301-803 Square design
Nominal size	25 mm
Valve function	2/2-way, closed, monostable
Manual override	None
Flow direction	Non-reversible
Medium	Compressed air to ISO 8573-1:2010 [7:4:4] Inert gases Neutral fluids Other media on request
Nominal pressure PN	40
Pressure difference	0.05 MPa
Pressure difference	0.5 bar
Pressure difference	7.25 psi
Characteristic coil data	110 V AC: 50/60 Hz, pick-up power 10.5 VA, holding power 8.0 VA
Insulation material class	H
Permissible voltage fluctuations	+/- 10 %
Duty cycle	100%
Type of piloting	Pilot actuated
Symbol	00992974
Medium pressure	0.05 MPa ... 4 MPa
Medium pressure	0.5 bar ... 40 bar
Medium pressure	7.25 psi ... 580 psi

Feature	Value
Max. viscosity	22 mm ² /s
Media temperature	-10 °C ... 80 °C
Ambient temperature	-10 °C ... 35 °C
Leakage rate to EN 12266-1	A
Flow rate Kv	11.5 m ³ /h
Standard nominal flow rate (standardised to DIN 1343)	12250 l/min
Switching time on	130 ms
Switching time off	300 ms
Note on materials	RoHS-compliant
LABS (PWIS) conformity	VDMA24364 zone III
Material housing	Cast brass
Material number housing	CW617N
Material seals	FPM
Material screws	High-alloy stainless steel
Material number screw	1.4301
Product weight	1400 g
CE mark (see declaration of conformity)	To EU Low Voltage Directive
UKCA marking (see declaration of conformity)	To UK regulations for electrical equipment
Degree of protection	IP65
Corrosion resistance class CRC	1 - Low corrosion stress