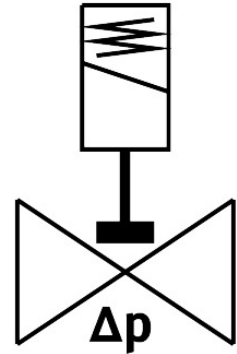


Solenoid valve

VZWP-L-M22C-N34-250-V-1P4-40

Part number: 1489978

FESTO



 General operating condition

Data sheet

| Feature | Value |
|----------------------------------|--|
| Design | Piloted piston poppet valve |
| Type of actuation | Electric |
| Sealing principle | Soft |
| Mounting position | Coil on top (preferred) |
| Type of mounting | In-line installation |
| Connection Process valve | 3/4 NPT |
| Electrical connection | Type A Plugs To EN 175301-803 Square design |
| Nominal size | 25 mm |
| Valve function | 2/2-way, closed, monostable |
| Manual override | None |
| Flow direction | Non-reversible |
| Medium | Compressed air to ISO 8573-1:2010 [7:4:4] Inert gases Neutral fluids Other media on request |
| Nominal pressure PN | 40 |
| Pressure difference | 0.05 MPa |
| Pressure difference | 0.5 bar |
| Pressure difference | 7.25 psi |
| Characteristic coil data | 24 V DC: 6.8 W |
| Insulation material class | H |
| Permissible voltage fluctuations | +/- 10 % |
| Duty cycle | 100% |
| Type of piloting | Pilot actuated |
| Symbol | 00992974 |
| Medium pressure | 0.05 MPa ... 4 MPa |
| Medium pressure | 0.5 bar ... 40 bar |
| Medium pressure | 7.25 psi ... 580 psi |

| Feature | Value |
|---|----------------------------|
| Max. viscosity | 22 mm ² /s |
| Media temperature | -10 °C ... 80 °C |
| Ambient temperature | -10 °C ... 35 °C |
| Leakage rate to EN 12266-1 | A |
| Flow rate Kv | 8.2 m ³ /h |
| Standard nominal flow rate (standardised to DIN 1343) | 8750 l/min |
| Switching time on | 130 ms |
| Switching time off | 300 ms |
| Note on materials | RoHS-compliant |
| LABS (PWIS) conformity | VDMA24364 zone III |
| Material housing | Cast brass |
| Material number housing | CW617N |
| Material seals | FPM |
| Material screws | High-alloy stainless steel |
| Material number screw | 1.4301 |
| Product weight | 1500 g |
| Degree of protection | IP65 |
| Corrosion resistance class CRC | 1 - Low corrosion stress |