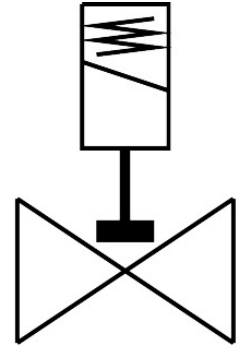


# Solenoid valve

## VZWD-L-M22C-M-G14-50-V-1P4-5

Part number: 1491846

FESTO



 [General operating condition](#)

## Data sheet

| Feature                          | Value  |
|----------------------------------|--|
| Design                           | Directly actuated poppet valve   |
| Type of actuation                | Electric   |
| Sealing principle                | Soft   |
| Mounting position                | optional   |
| Type of mounting                 | In-line installation   |
| Connection Process valve         | G1/4   |
| Electrical connection            | Type A<br>Plugs<br>To EN 175301-803<br>Square design   |
| Nominal size                     | 5 mm   |
| Valve function                   | 2/2-way, closed, monostable  |
| Manual override                  | None   |
| Flow direction                   | Non-reversible   |
| Medium                           | Compressed air to ISO 8573-1:2010 [7:4:4]<br>Inert gases<br>Mineral oil<br>Water<br>Neutral fluids<br>Other media on request |
| Nominal pressure PN              | 100  |
| Pressure difference              | 0 MPa  |
| Pressure difference              | 0 bar  |
| Pressure difference              | 0 psi  |
| Characteristic coil data         | 24 V DC: 11.0 W  |
| Insulation material class        | H  |
| Permissible voltage fluctuations | +/- 10 %   |
| Duty cycle                       | 100%   |
| Type of reset                    | Mechanical spring  |
| Type of piloting                 | Direct   |
| Symbol                           | 00992979   |
| Medium pressure                  | 0 MPa ... 0.5 MPa  |

| Feature   | Value                    |
|---|--------------------------|
| Medium pressure                                       | 0 bar ... 5 bar          |
| Medium pressure                                       | 0 psi ... 72.5 psi       |
| Max. viscosity  | 22 mm <sup>2</sup> /s    |
| Media temperature                                     | -10 °C ... 80 °C         |
| Ambient temperature                                   | -10 °C ... 35 °C         |
| Leakage rate to EN 12266-1                            | A                        |
| Flow rate Kv  | 0.35 m <sup>3</sup> /h   |
| Standard nominal flow rate (standardised to DIN 1343) | 375 l/min                |
| Switching time on                                     | 20 ms                    |
| Switching time off                                    | 18 ms                    |
| Note on materials                                     | RoHS-compliant           |
| LABS (PWIS) conformity                                | VDMA24364 zone III       |
| Material housing                                      | Brass                    |
| Material number housing                               | CW614N                   |
| Material seals  | FPM                      |
| Material plunger tube                                 | High-alloy steel         |
| Product weight  | 600 g                    |
| Degree of protection                                  | IP65                     |
| Corrosion resistance class CRC                        | 1 - Low corrosion stress |
| Max. tightening torque for connecting thread          | 35 Nm                    |
| Max. tightening torque for coil fastening             | 2 Nm                     |