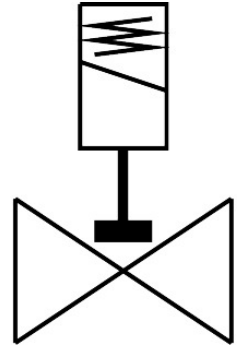


# Solenoid valve

## VZWD-L-M22C-M-G18-25-V-1P4-22-R1

FESTO

Part number: 1491851



 [General operating condition](#)

## Data sheet

Feature	Value
Design	Directly actuated poppet valve
Type of actuation	Electric
Sealing principle	Soft
Mounting position	optional
Type of mounting	In-line installation
Connection Process valve	G1/8
Electrical connection	Type A Plugs To EN 175301-803 Square design
Nominal size	2.5 mm
Valve function	2/2-way, closed, monostable
Manual override	None
Flow direction	Non-reversible
Medium	Compressed air to ISO 8573-1:2010 [7:4:4] Inert gases Mineral oil Water Neutral fluids Other media on request
Nominal pressure PN	100
Pressure difference	0 MPa
Pressure difference	0 bar
Pressure difference	0 psi
Characteristic coil data	24 V DC: 11.0 W
Insulation material class	H
Permissible voltage fluctuations	+/- 10 %
Duty cycle	100%
Type of reset	Mechanical spring
Type of piloting	Direct
Symbol	00992979
Medium pressure	0 MPa ... 2.2 MPa

Feature	Value
Medium pressure	0 bar ... 22 bar
Medium pressure	0 psi ... 319 psi
Max. viscosity	22 mm <sup>2</sup> /s
Media temperature	-10 °C ... 80 °C
Ambient temperature	-10 °C ... 35 °C
Leakage rate to EN 12266-1	A
Flow rate Kv	0.16 m <sup>3</sup> /h
Standard nominal flow rate (standardised to DIN 1343)	170 l/min
Switching time on	20 ms
Switching time off	18 ms
Note on materials	RoHS-compliant
LABS (PWIS) conformity	VDMA24364 zone III
Material housing	High-alloy stainless steel
Material number housing	1.4305
Material seals	FPM
Material plunger tube	High-alloy steel
Product weight	500 g
Degree of protection	IP65
Corrosion resistance class CRC	3 - high corrosion stress
Max. tightening torque for connecting thread	10 Nm
Max. tightening torque for coil fastening	2 Nm