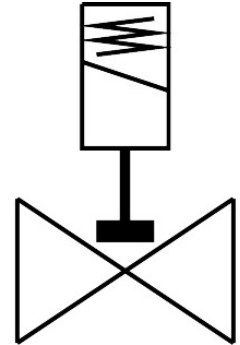


# Solenoid valve

## VZWD-L-M22C-M-G14-15-V-2AP4-85

FESTO

Part number: 1491919



[PDF](#) General operating condition

## Data sheet

Feature	Value
Design	Directly actuated poppet valve
Type of actuation	Electric
Sealing principle	Soft
Mounting position	optional
Type of mounting	In-line installation
Connection Process valve	G1/4
Electrical connection	Type A Plugs To EN 175301-803 Square design
Nominal size	1.5 mm
Valve function	2/2-way, closed, monostable
Manual override	None
Flow direction	Non-reversible
Medium	Compressed air to ISO 8573-1:2010 [7:4:4] Inert gases Mineral oil Water Neutral fluids Other media on request
Nominal pressure PN	100
Pressure difference	0 MPa
Pressure difference	0 bar
Pressure difference	0 psi
Characteristic coil data	110 V AC: 50/60 Hz, pick-up power 19.0 VA, holding power 16.0 VA
Insulation material class	F
Permissible voltage fluctuations	+/- 10 %
Duty cycle	100%
Type of reset	Mechanical spring
Type of piloting	Direct
Symbol	00992979
Medium pressure	0 MPa ... 8.5 MPa

<b>Feature</b>	<b>Value</b>
Medium pressure	0 bar ... 85 bar
Medium pressure	0 psi ... 1232.5 psi
Max. viscosity	22 mm <sup>2</sup> /s
Media temperature	-10 °C ... 80 °C
Ambient temperature	-10 °C ... 35 °C
Leakage rate to EN 12266-1	A
Flow rate Kv	0.09 m <sup>3</sup> /h
Standard nominal flow rate (standardised to DIN 1343)	95 l/min
Switching time on	20 ms
Switching time off	18 ms
Note on materials	RoHS-compliant
LABS (PWIS) conformity	VDMA24364 zone III
Material housing	Cast brass
Material number housing	CW617N
Material seals	FPM
Material plunger tube	High-alloy steel
Product weight	550 g
CE mark (see declaration of conformity)	To EU Low Voltage Directive
UKCA marking (see declaration of conformity)	To UK regulations for electrical equipment
Degree of protection	IP65
Corrosion resistance class CRC	1 - Low corrosion stress
Max. tightening torque for connecting thread	35 Nm
Max. tightening torque for coil fastening	2 Nm