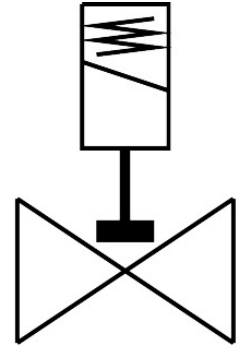


# Solenoid valve

## VZWD-L-M22C-M-G18-60-V-2AP4-4-R1

Part number: 1491933

FESTO



[PDF](#) General operating condition

## Data sheet

| Feature                          | Value  |
|----------------------------------|--|
| Design                           | Directly actuated poppet valve   |
| Type of actuation                | Electric   |
| Sealing principle                | Soft   |
| Mounting position                | optional   |
| Type of mounting                 | In-line installation   |
| Connection Process valve         | G1/8   |
| Electrical connection            | Type A<br>Plugs<br>To EN 175301-803<br>Square design   |
| Nominal size                     | 6 mm   |
| Valve function                   | 2/2-way, closed, monostable  |
| Manual override                  | None   |
| Flow direction                   | Non-reversible   |
| Medium                           | Compressed air to ISO 8573-1:2010 [7:4:4]<br>Inert gases<br>Mineral oil<br>Water<br>Neutral fluids<br>Other media on request |
| Nominal pressure PN              | 100  |
| Pressure difference              | 0 MPa  |
| Pressure difference              | 0 bar  |
| Pressure difference              | 0 psi  |
| Characteristic coil data         | 110 V AC: 50/60 Hz, pick-up power 19.0 VA, holding power 16.0 VA   |
| Insulation material class        | F  |
| Permissible voltage fluctuations | +/- 10 %   |
| Duty cycle                       | 100%   |
| Type of reset                    | Mechanical spring  |
| Type of piloting                 | Direct   |
| Symbol                           | 00992979   |
| Medium pressure                  | 0 MPa ... 0.4 MPa  |

| <b>Feature</b>  | <b>Value</b>                               |
|---|--|
| Medium pressure                                       | 0 bar ... 4 bar                            |
| Medium pressure                                       | 0 psi ... 58 psi                           |
| Max. viscosity  | 22 mm <sup>2</sup> /s                      |
| Media temperature                                     | -10 °C ... 80 °C                           |
| Ambient temperature                                   | -10 °C ... 35 °C                           |
| Leakage rate to EN 12266-1                            | A  |
| Flow rate Kv  | 0.4 m <sup>3</sup> /h                      |
| Standard nominal flow rate (standardised to DIN 1343) | 430 l/min                                  |
| Switching time on                                     | 20 ms                                      |
| Switching time off                                    | 18 ms                                      |
| Note on materials                                     | RoHS-compliant                             |
| LABS (PWIS) conformity                                | VDMA24364 zone III                         |
| Material housing                                      | High-alloy stainless steel                 |
| Material number housing                               | 1.4305                                     |
| Material seals  | FPM  |
| Material plunger tube                                 | High-alloy steel                           |
| Product weight  | 500 g                                      |
| CE mark (see declaration of conformity)               | To EU Low Voltage Directive                |
| UKCA marking (see declaration of conformity)          | To UK regulations for electrical equipment |
| Degree of protection                                  | IP65                                       |
| Corrosion resistance class CRC                        | 3 - high corrosion stress                  |
| Max. tightening torque for connecting thread          | 10 Nm                                      |
| Max. tightening torque for coil fastening             | 2 Nm                                       |