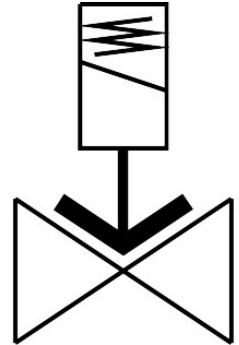


Solenoid valve

VZWF-B-L-M22C-G12-135-V-1P4-10

FESTO

Part number: 1492144



 [General operating condition](#)

Data sheet

Feature	Value
Design	Force pilot operated
Type of actuation	Electric
Sealing principle	Soft
Mounting position	Solenoid vertical
Type of mounting	In-line installation
Connection Process valve	G1/2
Electrical connection	Type A Plugs To EN 175301-803 Square design
Nominal size	13.5 mm
Valve function	2/2-way, closed, monostable
Manual override	None
Flow direction	Non-reversible
Medium	Compressed air to ISO 8573-1:2010 [7:-:-] Inert gases Mineral oil Water Neutral fluids Other media on request
Nominal pressure PN	40
Pressure difference	0 MPa
Pressure difference	0 bar
Pressure difference	0 psi
Characteristic coil data	24 V DC: 11.0 W
Permissible voltage fluctuations	+/- 10 %
Symbol	00992976
Medium pressure	0 MPa ... 1 MPa
Medium pressure	0 bar ... 10 bar
Medium pressure	0 psi ... 145 psi
Max. viscosity	22 mm ² /s
Media temperature	-10 °C ... 80 °C

Feature	Value
Ambient temperature	-10 °C ... 35 °C
Leakage rate to EN 12266-1	A
Flow rate Kv	2.5 m³/h
Standard nominal flow rate (standardised to DIN 1343)	2660 l/min
Switching time on	130 ms
Switching time off	180 ms
Note on materials	RoHS-compliant
LABS (PWIS) conformity	VDMA24364 zone III
Material housing	Cast brass
Material number housing	CW617N
Material seals	FPM
Material screws	High-alloy stainless steel
Material number screw	1.4301
Product weight	1000 g
Degree of protection	IP65
Corrosion resistance class CRC	1 - Low corrosion stress