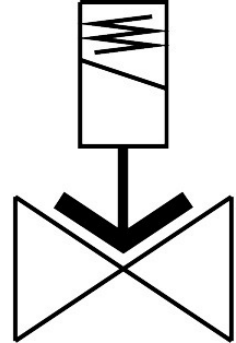


# Solenoid valve

## VZWF-B-L-M22C-N1-275-E-2AP4-6-R1

FESTO

Part number: 1492282



 [General operating condition](#)

## Data sheet

Feature	Value
Design	Force pilot operated
Type of actuation	Electric
Sealing principle	Soft
Mounting position	Solenoid vertical
Type of mounting	In-line installation
Connection Process valve	1 NPT
Electrical connection	Type A Plugs To EN 175301-803 Square design
Nominal size	27.5 mm
Valve function	2/2-way, closed, monostable
Manual override	None
Flow direction	Non-reversible
Medium	Compressed air to ISO 8573-1:2010 [7:-:-] Inert gases Mineral oil Water Neutral fluids Other media on request
Nominal pressure PN	40
Pressure difference	0 MPa
Pressure difference	0 bar
Pressure difference	0 psi
Characteristic coil data	110 V AC: 50/60 Hz, pick-up power 19.0 VA, holding power 16.0 VA
Permissible voltage fluctuations	+/- 10 %
Symbol	00992976
Medium pressure	0 MPa ... 0.6 MPa
Medium pressure	0 bar ... 6 bar
Medium pressure	0 psi ... 87 psi
Max. viscosity	22 mm <sup>2</sup> /s
Media temperature	-10 °C ... 80 °C

<b>Feature</b>	<b>Value</b>
Ambient temperature	-10 °C ... 35 °C
Leakage rate to EN 12266-1	A
Flow rate Kv	11 m <sup>3</sup> /h
Standard nominal flow rate (standardised to DIN 1343)	11750 l/min
Switching time on	275 ms
Switching time off	290 ms
Note on materials	RoHS-compliant
LABS (PWIS) conformity	VDMA24364 zone III
Material housing	Stainless steel casting
Material number housing	1.4581
Material seals	EPDM
Material screws	High-alloy stainless steel
Material number screw	1.4301
Product weight	1500 g
CE mark (see declaration of conformity)	To EU Low Voltage Directive
UKCA marking (see declaration of conformity)	To UK regulations for electrical equipment
Degree of protection	IP65
Corrosion resistance class CRC	3 - high corrosion stress