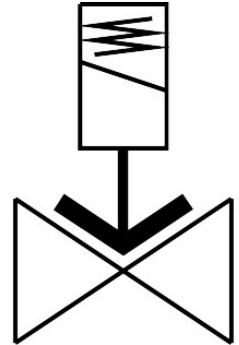


Solenoid valve

VZWF-B-L-M22C-G12-135-3AP4-10-R1

FESTO

Part number: 1492312



[PDF](#) General operating condition

Data sheet

Feature	Value
Design	Force pilot operated
Type of actuation	Electric
Sealing principle	Soft
Mounting position	Solenoid vertical
Type of mounting	In-line installation
Connection Process valve	G1/2
Electrical connection	Type A Plugs To EN 175301-803 Square design
Nominal size	13.5 mm
Valve function	2/2-way, closed, monostable
Manual override	None
Flow direction	Non-reversible
Medium	Compressed air to ISO 8573-1:2010 [7:-:-] Inert gases Mineral oil Water Neutral fluids Other media on request
Nominal pressure PN	40
Pressure difference	0 MPa
Pressure difference	0 bar
Pressure difference	0 psi
Characteristic coil data	230 V AC: 50/60 Hz, pick-up power 18.0 VA, holding power 15.0 VA
Permissible voltage fluctuations	+/- 10 %
Symbol	00992976
Medium pressure	0 MPa ... 1 MPa
Medium pressure	0 bar ... 10 bar
Medium pressure	0 psi ... 145 psi
Max. viscosity	22 mm ² /s
Media temperature	-10 °C ... 80 °C

Feature	Value
Ambient temperature	-10 °C ... 35 °C
Leakage rate to EN 12266-1	A
Flow rate Kv	2.5 m³/h
Standard nominal flow rate (standardised to DIN 1343)	2660 l/min
Switching time on	130 ms
Switching time off	180 ms
Note on materials	RoHS-compliant
LABS (PWIS) conformity	VDMA24364 zone III
Material housing	Stainless steel casting
Material number housing	1.4581
Material seals	NBR
Material screws	High-alloy stainless steel
Material number screw	1.4301
Product weight	1000 g
CE mark (see declaration of conformity)	In accordance with EU Pressure Equipment Directive To EU Low Voltage Directive
UKCA marking (see declaration of conformity)	to UK Pressure Equipment Regulations To UK regulations for electrical equipment
Degree of protection	IP65
Corrosion resistance class CRC	3 - high corrosion stress