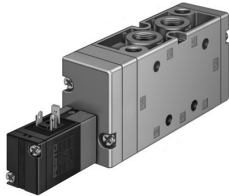


Solenoid valve MVH-5-3/8-L-B

Part number: 14947

FESTO



 General operating condition

Data sheet

Feature	Value
Valve function	5/2-way, monostable
Type of actuation	Electric
Construction width	40 mm
Standard nominal flow rate (standardised to DIN 1343)	2000 l/min
pneumatic working port	G3/8
Operating voltage	24V DC
Operating pressure	0.2 MPa ... 1 MPa
Operating pressure	2 bar ... 10 bar
Design	Piston gate valve
Type of reset	Pneumatic spring
Nominal size	12 mm
Grid dimension	41 mm
Exhaust-air function	With flow control option
Sealing principle	Soft
Mounting position	optional
Manual override	Non-detenting
Type of piloting	Pilot actuated
Pilot air supply	Internal
Flow direction	Non-reversible
Symbol	00991023
lap	Overlap
Max. switching frequency	3 Hz
Switching time off	60 ms
Switching time on	22 ms
Max. positive test pulse with 0 signal	2200 µs
Max. negative test pulse with 1 signal	3700 µs
Characteristic coil data	24 V DC: 2.5 W
Permissible voltage fluctuations	+/- 10 %
Operating medium	Compressed air to ISO 8573-1:2010 [7:4:4]
Note on operating and pilot medium	Lubricated operation possible (in which case lubricated operation will always be required)
Corrosion resistance class CRC	1 - Low corrosion stress
LABS (PWIS) conformity	VDMA24364-B1/B2-L
Storage temperature	-40 °C ... 60 °C
Media temperature	-5 °C ... 50 °C
Ambient temperature	-5 °C ... 50 °C

Feature	Value
Product weight	750 g
Type of mounting	Either: On PR rail With through-hole
Pilot exhaust port 84	M5
Pneumatic connection, port 1	G3/8
Pneumatic connection, port 2	G3/8
Pneumatic connection, port 3	G3/8
Pneumatic connection, port 4	G3/8
Pneumatic connection, port 5	G3/8
Note on materials	RoHS-compliant
Material seals	NBR
Material housing	Die-cast aluminium