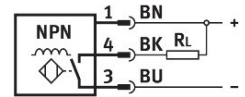
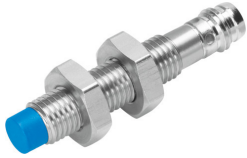


Proximity sensor SIEN-M8NB-NS-S-L

Part number: 150393

FESTO



[General operating condition](#)

Data sheet

Feature	Value
Conforms to standard	EN 60947-5-2
Symbol	00991703
Approval	RCM trademark c UL us listed (OL)
CE mark (see declaration of conformity)	To EU EMC Directive In accordance with EU RoHS Directive
UKCA marking (see declaration of conformity)	To UK instructions for EMC (UK-E) To UK RoHS instructions (UK-R)
Rated operating distance	2.5 mm
Assured operating distance	2.03 mm
Reduction factors	Aluminium = 0.25 Stainless steel St 18/8 = 0.7 Copper = 0.2 Brass = 0.35 Steel St 37 = 1.0
Ambient temperature	-25 °C ... 70 °C
Repetition accuracy with constant conditions	0.12 mm
Switching output	NPN
Switching element function	N/O contact
Hysteresis	≤0.12 mm
Max. switching frequency	3000 Hz
Max. output current	200 mA
Voltage drop	≤2 V
Inductive protective circuit	Integrated
Short circuit current rating	Pulsed
Operational voltage range DC	10 V ... 30 V
Residual ripple	± 10%
No-load supply current	≤10 mA
Reverse polarity protection	For all electrical connections
Electrical connection 1, connection type	Plugs
Electrical connection 1, connector system	M8x1, A-coded, to EN 61076-2-104
Electrical connection 1, number of connections/cores	3
Electrical connection 1, type of mounting	Snap-locking Screw-type lock Not rotatable
Electrical connection 1, compatible type of mounting	Compatible with latching lock Compatible with rotatable screw-type lock
Size	M8x1

Feature	Value
Type of mounting	Via lock nut
Mounting type	Not flush
Product weight	18 g
Material housing	PBTP High-alloy stainless steel Chrome-plated
Switching status indication	Yellow LED
Ambient temperature with moving cable	-5 °C ... 70 °C
Degree of protection	IP65 IP67
Corrosion resistance class CRC	2 - Moderate corrosion stress
LABS (PWIS) conformity	VDMA24364-B2-L
Additional information for sensor selection	with standard sensing distance
Electrical output	NPN
Selection of sensor design	Standard