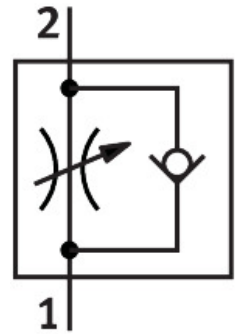


One-way flow control valve GRLA-1/8-PK-6-B

Part number: 151168

FESTO



 [General operating condition](#)

Data sheet

| Feature | Value |
|-------------------------------------------------------------------------------|----------------------------------------------------------------------------------------------------------------------------|
| Valve function | Exhaust air one-way flow control function |
| Pneumatic connection, port 1 | PK-6 with union nut |
| Pneumatic connection, port 2 | G1/8 |
| Adjustment component | Slotted head screw |
| Type of mounting | Screw-in |
| Standard nominal flow rate in flow control direction | 300 l/min |
| Standard nominal flow rate in blocked direction | 210 l/min ... 290 l/min |
| Ambient temperature | -10 °C ... 60 °C |
| Maritime classification | See certificate |
| Explosion protection | The information in the certificate must be observed! Zone 1 (ATEX) Zone 2 (ATEX) Zone 21 (ATEX) Zone 22 (ATEX) |
| Mounting position | optional |
| Symbol | 00991452 |
| Operating pressure complete temperature range | 0.3 bar ... 10 bar |
| Standard flow rate in flow control direction 0.6->0 MPa (6->0 bar, 87->0 psi) | 455 l/min |
| Standard flow rate in non-return direction 0.6->0 MPa (6->0 bar, 87->0 psi) | 320 l/min ... 440 l/min |
| Operating medium | Compressed air to ISO 8573-1:2010 [7:4:4] |
| Note on operating and pilot medium | Lubricated operation possible (in which case lubricated operation will always be required) |
| LABS (PWIS) conformity | VDMA24364-B1/B2-L |
| Cleanroom class | Class 4 according to ISO 14644-1 |
| Media temperature | -10 °C ... 60 °C |
| Max. tightening torque | 6 Nm |
| Product weight | 25 g |
| Material screwed plug | Wrought aluminium alloy |
| Note on materials | RoHS-compliant |

| Feature | Value |
|--------------------------|---------------|
| Material seals | NBR |
| Material adjusting screw | Brass |
| Material swivel fitting | Die-cast zinc |