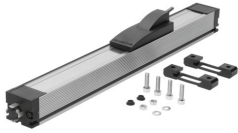


# Displacement encoder MLO-POT-360-TLF

Part number: 152627

FESTO



 General operating condition

## Data sheet

Feature	Value
CE mark (see declaration of conformity)	To EU EMC Directive
Functional principle of measuring system	Analogue
Ambient temperature	-30 °C ... 100 °C
Recommended wiper current	<1 µA
Max. wiper current, short-time	10000 µA
Max. travel speed	10 m/s
Max. travel acceleration	200 m/s <sup>2</sup>
Displacement resolution	0.01 mm
Non-dependent linearity	0.05 %
Temperature coefficient	5 ppm/K
Stroke	360 mm
Output signal	Analogue
Connection resistance	5 kOhm
Connection resistance tolerance	20 %
Nominal operating voltage DC	10 V
Max. operating voltage DC	42 V
Permissible voltage fluctuations	<1%
Max. current consumption	4 mA
Electrical connection	4-pin Type A Plugs To DIN 43650 Square design
Design	With cover strip With moving slide Open profile
Parallel offset of coupling	± 1.5 mm
Angle offset of driver	± 1 °
Mounting position	optional
Product weight	1100 g
Material housing	Anodised
Material covering	Steel
Material slide housing	Die-cast aluminium Polymer
Material slide coupling	Steel
Material cover	Polymer
Material mounting clips	PEI
Degree of protection at top	To IEC 60529

<b>Feature</b>	<b>Value</b>
Degree of protection at bottom	To IEC 60529
Vibration resistance to DIN/IEC 68 Part 2-6	Tested to severity level 2
Continuous shock resistance to DIN/IEC 68 Part 2-82	Tested to severity level 2
LABS (PWIS) conformity	VDMA24364-B2-L