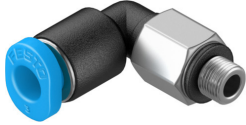


# Push-in L-fitting QSML-M3-3

Part number: 153330

FESTO



 General operating condition

## Data sheet

Feature	Value
Size	Mini
Nominal size	0.8 mm
Type of seal on screwed plug	Sealing ring
Mounting position	optional
Design	L-shape
Size of pack	10
Design	Push-pull principle
Operating pressure complete temperature range	-0.095 MPa ... 0.6 MPa
Operating pressure complete temperature range	-0.95 bar ... 6 bar
Operating pressure complete temperature range	-13.775 psi ... 87 psi
Temperature-dependent operating pressure	-0.095 MPa ... 1.4 MPa
Temperature-dependent operating pressure	-0.95 bar ... 14 bar
Temperature-dependent operating pressure	-13.775 psi ... 203 psi
Operating medium	Compressed air to ISO 8573-1:2010 [7:-:-]
Note on operating and pilot medium	Lubricated operation possible
Corrosion resistance class CRC	1 - Low corrosion stress
LABS (PWIS) conformity	VDMA24364-B1/B2-L
Ambient temperature	-10 °C ... 80 °C
Nominal torque	0.48 Nm
Tolerance for nominal tightening torque	± 55%
Product weight	1.4 g
Type of mounting	External hexagon, A/F 5.5 mm
Pneumatic connection, port 1	Male thread M3
Pneumatic connection, port 2	For tubing outer diameter of 3 mm
Colour of release ring	Blue
Material screwed plug	Nickel-plated brass
Note on materials	RoHS-compliant
Material housing	PBT
Material release ring	POM
Material tubing seal	NBR
Material tubing clamp component	High-alloy stainless steel