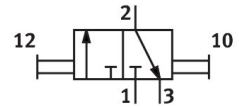


Hand slide valve VBOH-32-G12

Part number: 1587988

FESTO



 General operating condition

Data sheet

| Feature | Value |
|-------------------------------------------------------|-----------------------------------------------------------------------------------------------------------------------------------------------------------|
| Valve function | 3/2 bistable |
| Pneumatic connection, port 1 | G1/2 |
| Pneumatic connection, port 2 | G1/2 |
| Type of actuation | Manual |
| Type of mounting | In-line installation Screw-in |
| Standard nominal flow rate (standardised to DIN 1343) | 3420 l/min |
| Nominal size | 12.1 mm |
| Operating pressure | -0.095 MPa ... 1.2 MPa |
| Operating pressure | -0.95 bar ... 12 bar |
| Ambient temperature | -10 °C ... 80 °C |
| Material housing | Anodised wrought aluminium alloy |
| Operating medium | Compressed air to ISO 8573-1:2010 [7:4:4] |
| Grid dimension | 45 mm |
| Instructions on use | Please only screw in fittings with a cylindrical thread. Mounting conical threads can damage the housing and cause clamping or malfunction of the sleeve. |
| Sealing principle | Soft |
| Mounting position | optional |
| Design | Sleeve valve |
| Type of piloting | Direct |
| Symbol | 00991286 |
| Note on operating and pilot medium | Lubricated operation possible (in which case lubricated operation will always be required) |
| Corrosion resistance class CRC | 2 - Moderate corrosion stress |
| LABS (PWIS) conformity | VDMA24364-B2-L |
| Media temperature | -10 °C ... 80 °C |
| Actuating force | 37 N |
| Product weight | 90 g |
| Material screwed plug | Anodised wrought aluminium alloy |
| Note on materials | RoHS-compliant |
| Material seals | NBR |