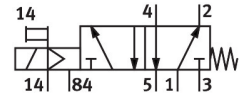


Solenoid valve MVH-5-1/4-S-B

Part number: 15903

FESTO



[General operating condition](#)

Data sheet

Feature	Value
Valve function	5/2-way, monostable
Type of actuation	Electric
Construction width	32 mm
Standard nominal flow rate (standardised to DIN 1343)	1300 l/min
pneumatic working port	G1/4
Operating pressure	0 MPa ... 1 MPa
Operating pressure	0 bar ... 10 bar
Design	Poppet seat
Type of reset	Mechanical spring
Nominal size	7 mm
Grid dimension	33 mm
Exhaust-air function	With flow control option
Sealing principle	Soft
Mounting position	optional
Manual override	Non-detenting
Type of piloting	Pilot actuated
Pilot air supply	External
Flow direction	Non-reversible
Symbol	00991024
lap	Underlap
Pilot pressure	0.15 MPa ... 0.8 MPa
Pilot pressure	1.5 bar ... 8 bar
b value	0.29
C value	5.5 l/sbar
Max. switching frequency	3 Hz
Switching time off	36 ms
Switching time on	15 ms
Max. positive test pulse with 0 signal	2200 µs
Max. negative test pulse with 1 signal	3700 µs
Characteristic coil data	24 V DC: 2.5 W
Permissible voltage fluctuations	+/- 10 %
Operating medium	Compressed air to ISO 8573-1:2010 [7:4:4]
Note on operating and pilot medium	Lubricated operation possible (in which case lubricated operation will always be required)
Corrosion resistance class CRC	1 - Low corrosion stress
LABS (PWIS) conformity	VDMA24364-B1/B2-L

Feature	Value
Storage temperature	-40 °C ... 60 °C
Media temperature	-5 °C ... 50 °C
Pilot medium	Compressed air to ISO 8573-1:2010 [7:4:4]
Ambient temperature	-5 °C ... 50 °C
Product weight	360 g
Type of mounting	Either: On PR rail With through-hole
Auxiliary pilot air port 14	G1/8
Pilot exhaust port 84	M5
Pilot air port 14	G1/8
Pneumatic connection, port 1	G1/4
Pneumatic connection, port 2	G1/4
Pneumatic connection, port 3	G1/4
Pneumatic connection, port 4	G1/4
Pneumatic connection, port 5	G1/4
Note on materials	RoHS-compliant
Material seals	NBR TPE-U(PU)
Material housing	Die-cast aluminium