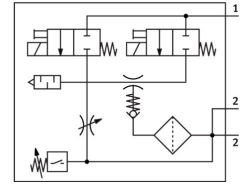


# Vacuum generator VADMI-200-N

Part number: 162533

FESTO



General operating condition

## Data sheet

Feature	Value
Nominal size, Laval nozzle	2 mm
Grid dimension	22 mm
Silencer design	Closed
Mounting position	optional
Ejector characteristic	High vacuum
Grade of filtration	≤40 μm
Manual override	Non-detenting
Integrated function	Electric ejector pulse valve Flow control Electric on-off valve Filter Check valve Vacuum switch
Measured variable	Relative pressure
Measuring principle	Piezoresistive
Switching element function	N/O contact
Switching function	Threshold value comparator
Symbol	00991306
Valve function	Closed
Reverse polarity protection	For all electrical connections
Display type	LED
Setting range hysteresis	-0.05 MPa ... -0.005 MPa
Setting range hysteresis	-0.5 bar ... -0.05 bar
Setting range hysteresis	-7.25 psi ... -0.725 psi
Setting options	Potentiometer
Switching status indication	Optical
Setting range threshold value	-0.09 MPa ... 0 MPa
Setting range threshold value	-0.9 bar ... 0 bar
Setting range threshold value	-13.05 psi ... 0 psi
Operating pressure	0.2 MPa ... 0.8 MPa
Operating pressure	2 bar ... 8 bar
Operating pressure	29 psi ... 116 psi
Max. vacuum	85 %
Nominal operating pressure	0.6 MPa
Nominal operating pressure	6 bar

Feature	Value
Nominal operating pressure	87 psi
Max. overload pressure	5 bar
Air supply time at nominal operating pressure with ejector pulse	0.15 s
Operational voltage range DC	21.6 V ... 26.4 V
Duty cycle	100%
Switching output	NPN
Approval	RCM trademark c UL us - Recognized (OL)
CE mark (see declaration of conformity)	To EU EMC Directive
UKCA marking (see declaration of conformity)	To UK instructions for EMC
Operating medium	Compressed air to ISO 8573-1:2010 [7:4:4]
Note on operating and pilot medium	Lubricated operation not possible
Corrosion resistance class CRC	2 - Moderate corrosion stress
LABS (PWIS) conformity	VDMA24364-B1/B2-L
Media temperature	0 °C ... 60 °C
Degree of protection	IP65
Ambient temperature	0 °C ... 50 °C
Product weight	360 g
Pressure measuring range	0 MPa ... 0.1 MPa
Pressure measuring range	0 bar ... 1 bar
Pressure measuring range	0 psi ... 14.5 psi
Electrical connection	4-pin M8x1 Plugs
Type of mounting	Either: With through-hole Via female thread
Pneumatic connection, port 1	G1/4
Pneumatic connection, port 3	Integrated silencer
Vacuum connection	G3/8
Note on materials	RoHS-compliant
Material seals	NBR
Material receiver nozzle	Brass, nickel-plated
Material filter	PA
Material filter housing	PC
Material housing	Wrought aluminium alloy
Material silencer	PE POM
Material piston	POM
Material transmitter nozzle	Nickel-plated brass