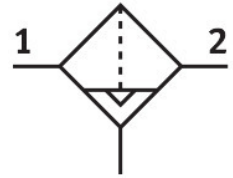


Filter LF-1/2-D-5M-MIDI-A

Part number: 162622

FESTO



 General operating condition

Data sheet

| Feature | Value |
|---|--|
| Size | Midi |
| Series | D |
| Mounting position | Vertical +/-5° |
| Grade of filtration | 5 µm |
| Condensate drain | Fully automatic |
| Design | Sintered filter with centrifugal separator |
| Bowl guard | Metal bowl guard |
| Symbol | 00991520 |
| Operating pressure | 2 bar ... 12 bar |
| Standard nominal flow rate (standardised to DIN 1343) | 2000 l/min |
| Operating medium | Compressed air to ISO 8573-1:2010 [7:9:-] Inert gases |
| Corrosion resistance class CRC | 2 - Moderate corrosion stress |
| LABS (PWIS) conformity | VDMA24364-B1/B2-L |
| Storage temperature | -10 °C ... 60 °C |
| Air purity class at output | Compressed air to ISO 8573-1:2010 [6:8:4] Inert gases |
| Media temperature | 5 °C ... 60 °C |
| Ambient temperature | 5 °C ... 60 °C |
| Product weight | 700 g |
| Type of mounting | In-line installation With accessories |
| Pneumatic connection, port 1 | G1/2 |
| Pneumatic connection, port 2 | G1/2 |
| Note on materials | RoHS-compliant |
| Material filter | PE |
| Material housing | Die-cast zinc |
| Material bowl | PC |