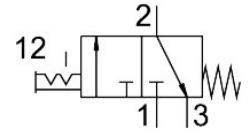


# On/off valve HE-3/8-D-MINI

Part number: 162808

FESTO



[PDF](#) General operating condition

## Data sheet

Feature	Value
Design	Piston gate valve
Type of actuation	Manual
Sealing principle	Soft
Exhaust-air function	Without flow control option
Manual override	None
Symbol	00995571
Valve function	3/2 bistable
Operating pressure	0 MPa ... 1.6 MPa
Operating pressure	0 bar ... 16 bar
C value	7.5 l/sbar
b value	0.27
Standard nominal flow rate (standardised to DIN 1343)	1600 l/min
Operating medium	Compressed air to ISO 8573-1:2010 [7:4:4] Inert gases
Note on operating and pilot medium	Lubricated operation possible (in which case lubricated operation will always be required)
Corrosion resistance class CRC	2 - Moderate corrosion stress
Note on materials	RoHS-compliant
LABS (PWIS) conformity	VDMA24364-B1/B2-L
Media temperature	-10 °C ... 60 °C
Ambient temperature	-10 °C ... 60 °C
Type of mounting	In-line installation With accessories
Mounting position	optional
Flow direction	Non-reversible
Product weight	192 g
Pneumatic connection, port 1	G3/8
Pneumatic connection, port 2	G3/8
Pneumatic connection, port 3	G1/8
Air purity class at output	Compressed air to ISO 8573-1:2010 [7:4:4] Inert gases
Material seals	NBR
Material housing	Die-cast aluminium