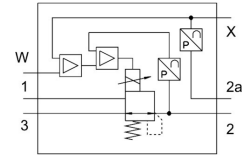


# Proportional-pressure regulator VPPL-3Q-3-Z-0L20H-V1-A-S1-4

Part number: 1635975

FESTO



[PDF General operating condition](#)

## Data sheet

Feature	Value
Nominal size, supply	3 mm
Nominal size, exhaust	3 mm
Type of actuation	Electric
Sealing principle	Soft
Mounting position	optional Preferably vertical
Design	Directly actuated piston regulator
Short circuit current rating	no
Max. cable length	30 m
Safety instructions	Safety position VPPL: if the power supply cable is interrupted, the output pressure drops to 0 bar.
Symbol	00995268
Reverse polarity protection	For all electrical connections
Type of reset	Mechanical spring
Type of piloting	Direct
Valve function	3-way proportional-pressure regulator, closed
Display type	LED indicator
Operating pressure	≤2 MPa
Operating pressure	≤20 bar
Pressure regulation range	0.02 MPa ... 2 MPa
Pressure regulation range	0.2 bar ... 20 bar
Inlet pressure 1	0 bar ... 50 bar
Inlet pressure 1	0 MPa ... 5 MPa
Max. pressure hysteresis	0.01 MPa
Max. pressure hysteresis	0.1 bar
Max. pressure hysteresis	1.45 psi
b value	0.25
C value	0.8 l/sbar
Standard nominal flow rate (standardised to DIN 1343)	245 l/min
Standard nominal flow rate 2-3	282 l/min
Switching time off	654 ms
Switching time on	428 ms
Operational voltage range DC	21.6 V ... 27.6 V
Duty cycle	100%
Max. electrical power consumption	26.7 W

Feature	Value
Residual ripple	10 %
Signal range analogue output	4 - 20 mA
Signal range analogue input	0 - 10 V
SETPOINT/ACTUAL values	Voltage type 0 - 10 V
Operating medium	Compressed air to ISO 8573-1:2010 [7:4:4] Inert gases
Note on operating and pilot medium	Lubricated operation not possible
Approval	c UL us listed (OL)
KC mark	KC-EMV
CE mark (see declaration of conformity)	To EU EMC Directive
UKCA marking (see declaration of conformity)	To UK instructions for EMC
Corrosion resistance class CRC	2 - Moderate corrosion stress
LABS (PWIS) conformity	VDMA24364 zone III
Media temperature	5 °C ... 50 °C
Degree of protection	IP65
Ambient temperature	5 °C ... 50 °C
Storage temperature	-10 °C ... 60 °C
Product weight	1100 g
Linearity error in ± %FS	0.5 %FS
Total accuracy	0.5% FS
Temperature coefficient	0.04 %/K
Repetition accuracy in ± %FS	0.5 %FS
Electrical connection diagnostics interface	Socket, M12, 5-pin, A-coded
Electrical connection, IN	Plug connector, M12, 5-pin, A-coded
Electrical connection, OUT	Plug connector, M12, 5-pin, A-coded
Type of mounting	With through-hole
Pneumatic connection, port 1	Flange G1/4
Pneumatic connection, port 2	Flange
Pneumatic connection, port 3	Flange
Note on materials	RoHS-compliant
Material housing	Anodised wrought aluminium alloy