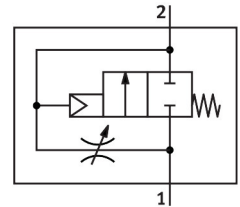


# On/off valve HEL-1-D-MAXI

Part number: 165083

FESTO



[PDF](#) General operating condition

## Data sheet

| Feature   | Value  |
|---|--|
| Exhaust-air function                                  | With flow control option   |
| Type of actuation                                     | Pneumatic  |
| Sealing principle                                     | Soft   |
| Mounting position                                     | optional   |
| Manual override                                       | None   |
| Design  | Piston gate valve  |
| Type of reset   | Mechanical spring  |
| Type of piloting                                      | Direct   |
| Flow direction  | Non-reversible   |
| Symbol  | 00991513   |
| Valve function  | 2/2-way, closed, monostable  |
| Operating pressure                                    | 0.3 MPa ... 1.6 MPa  |
| Operating pressure                                    | 3 bar ... 16 bar   |
| b value   | 0.54   |
| C value   | 28.3 l/sbar  |
| Standard nominal flow rate (standardised to DIN 1343) | 6500 l/min   |
| Operating medium                                      | Compressed air to ISO 8573-1:2010 [7:4:4]<br>Inert gases                                   |
| Note on operating and pilot medium                    | Lubricated operation possible (in which case lubricated operation will always be required) |
| Corrosion resistance class CRC                        | 2 - Moderate corrosion stress  |
| LABS (PWIS) conformity                                | VDMA24364-B1/B2-L  |
| Air purity class at output                            | Compressed air to ISO 8573-1:2010 [7:4:4]<br>Inert gases                                   |
| Media temperature                                     | -10 °C ... 60 °C   |
| Ambient temperature                                   | -10 °C ... 60 °C   |
| Product weight  | 394 g  |
| Type of mounting                                      | In-line installation   |
| Pneumatic connection, port 1                          | G1   |
| Pneumatic connection, port 2                          | G1   |
| Note on materials                                     | RoHS-compliant   |
| Material seals  | NBR  |
| Material housing                                      | Die-cast aluminium   |