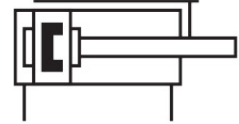
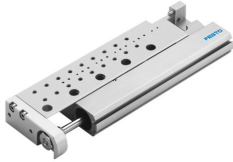


Mini slide SLF-10-40-P-A

Part number: 170509

FESTO



 [General operating condition](#)

Data sheet

Feature	Value
Stroke	40 mm
Adjustable end-position range/length	5 mm
Piston diameter	10 mm
Operating mode, drive unit	Yoke
Cushioning	Elastic cushioning rings/plates at both ends
Mounting position	optional
Guide	Ball bearing cage guide
Design	Yoke Piston Piston rod Ball roller guide Slide
Position detection	Via proximity switch
Symbol	00991737
Operating pressure	0.1 MPa ... 1 MPa
Operating pressure	1 bar ... 10 bar
Operating pressure	14.5 psi ... 145 psi
Mode of operation	Double-acting
Operating medium	Compressed air to ISO 8573-1:2010 [7:4:4]
Note on operating and pilot medium	Lubricated operation possible (in which case lubricated operation will always be required)
Corrosion resistance class CRC	0 - No corrosion stress
LABS (PWIS) conformity	VDMA24364-B2-L
Ambient temperature	-20 °C ... 60 °C
Impact energy in end positions	0.05 J
Max. force F _y	150 N
Max. force F _z	150 N
Max. moment M _x	0.9 Nm
Max. moment M _y	0.9 Nm
Max. moment M _z	0.5 Nm
Theoretical force at 0.6 MPa (6 bar, 87 psi), return stroke	40 N
Theoretical force at 0.6 MPa (6 bar, 87 psi), advance stroke	47 N
Moving mass	60 g
Product weight	178 g
Basic weight for 0 mm stroke	178 g
alternative connections	See product drawing
Type of mounting	With through-hole

Feature	Value
Pneumatic connection	M5
Note on materials	RoHS-compliant
Material cover	Wrought aluminium alloy
Material seals	HNBR
Material housing	Wrought aluminium alloy
Material piston rod	High-alloy stainless steel