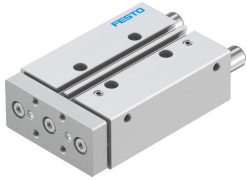


Guided drive DFM-16-50-P-A-GF

Part number: 170837

FESTO



 [General operating condition](#)

Data sheet

Feature	Value
Distance from centre of gravity of load to yoke plate xs	50 mm
Stroke	50 mm
Piston diameter	16 mm
Operating mode, drive unit	Yoke
Cushioning	Elastic cushioning rings/plates at both ends
Mounting position	optional
Guide	Plain-bearing guide
Design	Guidance
Position detection	Via proximity switch
Symbol	00991737
Operating pressure	0.2 MPa ... 1 MPa
Operating pressure	2 bar ... 10 bar
Max. speed	0.8 m/s
Mode of operation	Double-acting
Operating medium	Compressed air to ISO 8573-1:2010 [7:4:4]
Note on operating and pilot medium	Lubricated operation possible (in which case lubricated operation will always be required)
Corrosion resistance class CRC	1 - Low corrosion stress
LABS (PWIS) conformity	VDMA24364-B1/B2-L
Cleanroom class	Class 6 according to ISO 14644-1
Ambient temperature	-20 °C ... 80 °C
Impact energy in end positions	0.15 J
Max. force Fy	608 N
Max. force Fy static	608 N
Max. force Fz	608 N
Max. force Fz static	608 N
Max. moment Mx	13.98 Nm
Max. torque Mx static	13.98 Nm
Max. moment My	10.34 Nm
Max. torque My static	10.34 Nm
Max. moment Mz	10.34 Nm
Max. torque Mz static	10.34 Nm
Max. permissible torque load Mx as a function of stroke	2.2 Nm
Max. effective load dependent upon stroke at defined distance xs	67 N
Theoretical force at 0.6 MPa (6 bar, 87 psi), return stroke	90 N
Theoretical force at 0.6 MPa (6 bar, 87 psi), advance stroke	121 N

Feature	Value
Moving mass	364 g
Product weight	772 g
alternative connections	See product drawing
Pneumatic connection	M5
Note on materials	RoHS-compliant
Material cover	Wrought aluminium alloy
Material seals	NBR
Material housing	Wrought aluminium alloy
Material piston rod	High-alloy stainless steel