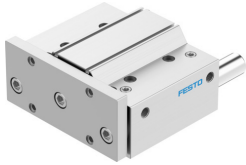


Guided drive DFM-100-100-P-A-GF

Part number: 170895

FESTO



 [General operating condition](#)

Data sheet

Feature	Value
Distance from centre of gravity of load to yoke plate xs	125 mm
Stroke	100 mm
Piston diameter	100 mm
Operating mode, drive unit	Yoke
Cushioning	Elastic cushioning rings/plates at both ends
Mounting position	optional
Guide	Plain-bearing guide
Design	Guidance
Position detection	Via proximity switch
Symbol	00991737
Operating pressure	0.05 MPa ... 1 MPa
Operating pressure	0.5 bar ... 10 bar
Max. speed	0.4 m/s
Mode of operation	Double-acting
Operating medium	Compressed air to ISO 8573-1:2010 [7:4:4]
Note on operating and pilot medium	Lubricated operation possible (in which case lubricated operation will always be required)
Corrosion resistance class CRC	1 - Low corrosion stress
LABS (PWIS) conformity	VDMA24364-B1/B2-L
Cleanroom class	Class 6 according to ISO 14644-1
Ambient temperature	-20 °C ... 80 °C
Impact energy in end positions	1 J
Max. force Fy	3640 N
Max. force Fy static	3640 N
Max. force Fz	3640 N
Max. force Fz static	3640 N
Max. moment Mx	342.2 Nm
Max. torque Mx static	342.2 Nm
Max. moment My	205.7 Nm
Max. torque My static	205.7 Nm
Max. moment Mz	205.7 Nm
Max. torque Mz static	205.7 Nm
Max. permissible torque load Mx as a function of stroke	70.12 Nm
Max. effective load dependent upon stroke at defined distance xs	533 N
Theoretical force at 0.6 MPa (6 bar, 87 psi), return stroke	4418 N
Theoretical force at 0.6 MPa (6 bar, 87 psi), advance stroke	4712 N

Feature	Value
Moving mass	8523 g
Product weight	15760 g
alternative connections	See product drawing
Pneumatic connection	G3/8
Note on materials	RoHS-compliant
Material cover	Wrought aluminium alloy
Material seals	NBR
Material housing	Wrought aluminium alloy
Material piston rod	High-alloy stainless steel