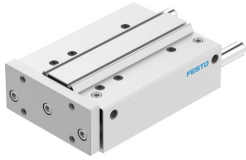


# Guided drive DFM-80-200-P-A-KF

Part number: 170966

FESTO



 [General operating condition](#)

## Data sheet

| Feature  | Value  |
|--|--|
| Distance from centre of gravity of load to yoke plate xs         | 125 mm   |
| Stroke   | 200 mm   |
| Piston diameter  | 80 mm  |
| Operating mode, drive unit                                       | Yoke   |
| Cushioning   | Elastic cushioning rings/plates at both ends   |
| Mounting position  | optional   |
| Guide  | Recirculating ball bearing guide   |
| Design   | Guidance   |
| Position detection   | Via proximity switch   |
| Symbol   | 00991737   |
| Operating pressure   | 0.05 MPa ... 1 MPa   |
| Operating pressure   | 0.5 bar ... 10 bar   |
| Max. speed   | 0.4 m/s  |
| Mode of operation  | Double-acting  |
| Operating medium   | Compressed air to ISO 8573-1:2010 [7:4:4]  |
| Note on operating and pilot medium                               | Lubricated operation possible (in which case lubricated operation will always be required) |
| Corrosion resistance class CRC                                   | 0 - No corrosion stress  |
| LABS (PWIS) conformity   | VDMA24364-B1/B2-L  |
| Cleanroom class  | Class 6 according to ISO 14644-1   |
| Ambient temperature  | -5 °C ... 60 °C  |
| Impact energy in end positions                                   | 0.75 J   |
| Max. force Fy  | 2048 N   |
| Max. force Fy static   | 3120 N   |
| Max. force Fz  | 2048 N   |
| Max. force Fz static   | 3120 N   |
| Max. moment Mx   | 158.67 Nm  |
| Max. torque Mx static  | 241.8 Nm   |
| Max. moment My   | 100.35 Nm  |
| Max. torque My static  | 152.9 Nm   |
| Max. moment Mz   | 100.35 Nm  |
| Max. torque Mz static  | 152.9 Nm   |
| Max. permissible torque load Mx as a function of stroke          | 22.39 Nm   |
| Max. effective load dependent upon stroke at defined distance xs | 277 N  |
| Theoretical force at 0.6 MPa (6 bar, 87 psi), return stroke      | 2827 N   |
| Theoretical force at 0.6 MPa (6 bar, 87 psi), advance stroke     | 3016 N   |

| <b>Feature</b>   | <b>Value</b>               |
|--|----------------------------|
| Moving mass  | 5861 g                     |
| Product weight   | 13214 g                    |
| Centre of gravity of moving mass as a function of stroke | 115.2 mm                   |
| alternative connections                                  | See product drawing        |
| Pneumatic connection                                     | G3/8                       |
| Note on materials  | RoHS-compliant             |
| Material cover   | Wrought aluminium alloy    |
| Material seals   | NBR                        |
| Material housing   | Wrought aluminium alloy    |
| Material piston rod                                      | High-alloy stainless steel |