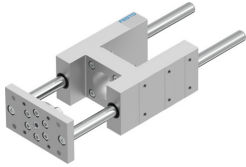


Guide unit EAGF-V2-KF-63-200

Part number: 1725843

FESTO



 General operating condition

Data sheet

| Feature | Value |
|---|----------------------------------|
| Size | 63 |
| Stroke | 200 mm |
| Reversing backlash theoretical | 0 µm |
| Mounting position | optional |
| Guide | Recirculating ball bearing guide |
| Design | Guidance |
| Corrosion resistance class CRC | 0 - No corrosion stress |
| LABS (PWIS) conformity | VDMA24364-B2-L |
| Ambient temperature | -20 °C ... 80 °C |
| Max. force F _y | 1260 N |
| Max. force F _y static | 1600 N |
| Max. force F _z | 1260 N |
| Max. force F _z static | 1600 N |
| Max. moment M _x | 75 Nm |
| Max. torque M _x static | 95 Nm |
| Max. moment M _y | 90 Nm |
| Max. torque M _y static | 115 Nm |
| Max. moment M _z | 90 Nm |
| Max. torque M _z static | 115 Nm |
| Displacement force | 15 N |
| Moving mass | 3539 g |
| Product weight | 6505 g |
| Centre of gravity at 0 mm stroke | 48 mm |
| Centre of gravity additional of moving mass per 10 mm | 4.1 mm |
| Type of mounting | Via female thread |
| Note on materials | RoHS-compliant |
| Material guide component | Tempered steel |
| Material housing | Anodised |
| Material yoke plate | Steel |