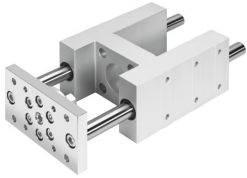


# Guide unit EAGF-V2-KF-80-100

Part number: 1725846

FESTO



 General operating condition

## Data sheet

Feature	Value
Size	80
Stroke	100 mm
Reversing backlash theoretical	0 µm
Mounting position	optional
Guide	Recirculating ball bearing guide
Design	Guidance
Corrosion resistance class CRC	0 - No corrosion stress
LABS (PWIS) conformity	VDMA24364-B2-L
Ambient temperature	-20 °C ... 80 °C
Max. force F <sub>y</sub>	2300 N
Max. force F <sub>y</sub> static	3120 N
Max. force F <sub>z</sub>	2300 N
Max. force F <sub>z</sub> static	3120 N
Max. moment M <sub>x</sub>	170 Nm
Max. torque M <sub>x</sub> static	231 Nm
Max. moment M <sub>y</sub>	191 Nm
Max. torque M <sub>y</sub> static	259 Nm
Max. moment M <sub>z</sub>	191 Nm
Max. torque M <sub>z</sub> static	259 Nm
Displacement force	40 N
Moving mass	5910 g
Product weight	11277 g
Centre of gravity at 0 mm stroke	54 mm
Centre of gravity additional of moving mass per 10 mm	3.8 mm
Type of mounting	Via female thread
Note on materials	RoHS-compliant
Material guide component	Tempered steel
Material housing	Anodised
Material yoke plate	Steel