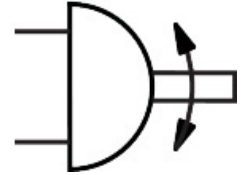
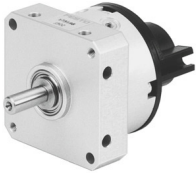


Semi-rotary drive DSM-8-90-P-A

Part number: 173197

FESTO



 General operating condition

Data sheet

Feature	Value
Size	8
Cushioning angle	0.5 deg
Swivel angle	0 deg ... 90 deg
Cushioning	Elastic cushioning rings/plates at both ends
Mounting position	optional
Mode of operation	Double-acting
Design	Vane
Position detection	Via proximity switch
Symbol	00991265
Operating pressure	3.5 bar ... 8 bar
Max. swivel frequency at 0.6 MPa (6 bar, 87 psi)	3 Hz
Operating medium	Compressed air to ISO 8573-1:2010 [7:4:4]
Note on operating and pilot medium	Lubricated operation possible (in which case lubricated operation will always be required)
LABS (PWIS) conformity	VDMA24364-B1/B2-L
Cleanroom class	Class 6 according to ISO 14644-1
Ambient temperature	0 °C ... 60 °C
Theoretical torque at 0.6 MPa (6 bar, 87 psi)	0.35 Nm
Permissible mass moment of inertia	0.0013 kgm ²
Product weight	85 g
Type of mounting	Via female thread
Pneumatic connection	M3
Note on materials	RoHS-compliant
Material drive shaft	High-alloy stainless steel
Material seals	TPE-U(PU)
Material housing	Anodised