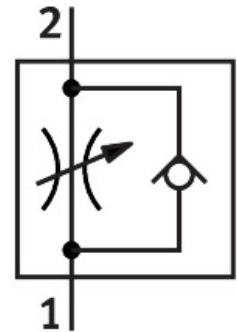


# One-way flow control valve GRLZ-M5-QS-3-LF-C

Part number: 175055

FESTO



 [General operating condition](#)

## Data sheet

Feature	Value
Valve function	Supply air one-way flow control function
Pneumatic connection, port 1	QS-3
Pneumatic connection, port 2	M5
Adjustment component	Slotted head screw
Type of mounting	Screw-in
Standard nominal flow rate in flow control direction	48 l/min
Standard nominal flow rate in blocked direction	36 l/min ... 52 l/min
Operating pressure	0.2 bar ... 10 bar
Operating pressure	2.9 psi ... 145 psi
Ambient temperature	-10 °C ... 60 °C
Mounting position	optional
Symbol	00991453
Standard flow rate in flow control direction 0.6->0 MPa (6->0 bar, 87->0 psi)	80 l/min
Standard flow rate in non-return direction 0.6->0 MPa (6->0 bar, 87->0 psi)	60 l/min ... 90 l/min
Operating medium	Compressed air to ISO 8573-1:2010 [7:4:4]
Note on operating and pilot medium	Lubricated operation possible (in which case lubricated operation will always be required)
LABS (PWIS) conformity	VDMA24364-B1/B2-L
Cleanroom class	Class 4 according to ISO 14644-1
Media temperature	-10 °C ... 60 °C
Max. tightening torque	1.5 Nm
Product weight	9 g
Material screwed plug	Brass Nickel-plated
Note on materials	RoHS-compliant
Material seals	NBR
Material release ring	POM
Material adjusting screw	Brass

Feature	Value
Material swivel fitting	Die-cast zinc