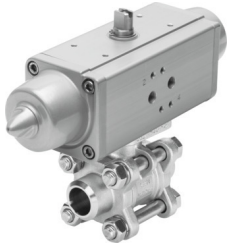



# Ball valve actuator unit

## VZBA-1/2"-WW-63-T-22-F0304-V4V4T-PS15-R-90-4-C

FESTO

Part number: 1774105



 General operating condition

## Data sheet

Feature	Value
Design	2-way ball valve Semi-rotary drive
Type of actuation	Pneumatic
Mounting position	optional
Type of mounting	In-line installation
Connection Process valve	Weld-on ends/weld-on ends
Switching position indicator	Slot direction = flow direction
Nominal size DN	15
Operating pressure	6 bar ... 8.4 bar
Nominal pressure PN	63
Symbol	00992011
Medium	Compressed air to ISO 8573-1:2010 [-:~:] Inert gases Water – no water vapour Neutral fluids
Operating medium	Compressed air to ISO 8573-1:2010 [7:4:4]
Note on operating and pilot medium	Lubricated operation possible (in which case lubricated operation will always be required)
Media temperature	-10 °C ... 200 °C
Ambient temperature	-10 °C ... 80 °C
Flow rate Kv	19.4 m <sup>3</sup> /h
Max. surface temperature assembly	TX
explosion group assembly	IIC, IIIC
Note on materials	RoHS-compliant
LABS (PWIS) conformity	VDMA24364 zone III
Material housing	High-alloy stainless steel
Material number housing	1.4408
Material seals	PTFE PTFE reinforced
Material ball	High-alloy stainless steel
Material number ball	1.4408
Material shaft	High-alloy stainless steel
Material number shaft	1.4401
Product weight	2000 g

Feature	Value
Explosion protection	Zone 1 (ATEX) Zone 2 (ATEX) Zone 21 (ATEX) Zone 22 (ATEX)
Explosion ambient temperature	-10 °C ≤ Ta ≤ +60 °C
Corrosion resistance class CRC	3 - high corrosion stress