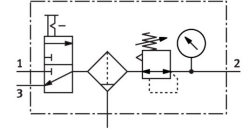


# Service unit combination LFR-1/2-D-MIDI-KC

Part number: 185739

FESTO



 General operating condition

## Data sheet

| Feature   | Value  |
|---|--|
| Size  | Midi   |
| Series  | D  |
| Actuator lock   | Rotary knob with detent                                  |
| Mounting position                                     | Vertical +/-5°   |
| Grade of filtration                                   | 40 µm  |
| Condensate drain                                      | Manually rotating  |
| Design  | On/off valve<br>Filter regulator with pressure gauge     |
| Max. condensate volume                                | 43 ml  |
| Bowl guard  | Metal bowl guard   |
| Symbol  | 00991523   |
| Pressure gauge (ANALOG) or Pressure display (DIGITAL) | With pressure gauge                                      |
| Operating pressure                                    | 0.1 MPa ... 1.6 MPa                                      |
| Operating pressure                                    | 1 bar ... 16 bar   |
| Operating pressure                                    | 14.5 psi ... 232 psi                                     |
| Pressure regulation range                             | 0.05 MPa ... 1.2 MPa                                     |
| Pressure regulation range                             | 0.5 bar ... 12 bar                                       |
| Pressure regulation range                             | 7.25 psi ... 174 psi                                     |
| Max. pressure hysteresis                              | 0.02 MPa   |
| Max. pressure hysteresis                              | 0.2 bar  |
| Max. pressure hysteresis                              | 2.9 psi  |
| Standard nominal flow rate (standardised to DIN 1343) | 3150 l/min   |
| Operating medium                                      | Compressed air to ISO 8573-1:2010 [-:-:-]<br>Inert gases |
| Corrosion resistance class CRC                        | 2 - Moderate corrosion stress                            |
| LABS (PWIS) conformity                                | VDMA24364-B1/B2-L  |
| Air purity class at output                            | Compressed air to ISO 8573-1:2010 [7:8:4]<br>Inert gases |
| Media temperature                                     | -10 °C ... 60 °C   |
| Ambient temperature                                   | -10 °C ... 60 °C   |
| Product weight  | 1600 g   |
| Type of mounting                                      | Either:<br>In-line installation<br>With accessories      |
| Pneumatic connection, port 1                          | G1/2   |
| Pneumatic connection, port 2                          | G1/2   |
| Material housing                                      | Die-cast zinc  |

| Feature       | Value |
|---------------|-------|
| Material bowl | PC    |