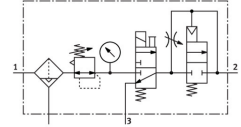
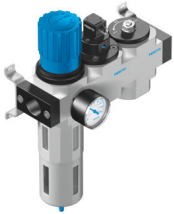


# Service unit combination LFR-1/4-D-MINI-KD-A

Part number: 185746

FESTO



[PDF](#) General operating condition

## Data sheet

| Feature   | Value   |
|---|---|
| Size  | Mini  |
| Series  | D   |
| Actuator lock   | Rotary knob with detent   |
| Mounting position                                     | Vertical +/-5°  |
| Grade of filtration                                   | 40 µm   |
| Condensate drain                                      | Fully automatic   |
| Design  | On/off valve<br>Filter regulator with pressure gauge<br>Safety start-up valve |
| Max. condensate volume                                | 22 ml   |
| Bowl guard  | Metal bowl guard  |
| Symbol  | 00991572  |
| Pressure gauge (ANALOG) or Pressure display (DIGITAL) | With pressure gauge   |
| Operating pressure                                    | 0.3 MPa ... 1.2 MPa   |
| Operating pressure                                    | 3 bar ... 12 bar  |
| Operating pressure                                    | 43.5 psi ... 174 psi  |
| Pressure regulation range                             | 0.25 MPa ... 1.2 MPa  |
| Pressure regulation range                             | 2.5 bar ... 12 bar  |
| Pressure regulation range                             | 36.25 psi ... 174 psi   |
| Max. pressure hysteresis                              | 0.015 MPa   |
| Max. pressure hysteresis                              | 0.15 bar  |
| Max. pressure hysteresis                              | 2.175 psi   |
| Standard nominal flow rate (standardised to DIN 1343) | 730 l/min   |
| Operating medium                                      | Compressed air to ISO 8573-1:2010 [-:-:-]<br>Inert gases                      |
| Corrosion resistance class CRC                        | 2 - Moderate corrosion stress   |
| LABS (PWIS) conformity                                | VDMA24364-B1/B2-L   |
| Air purity class at output                            | Compressed air to ISO 8573-1:2010 [7:8:4]<br>Inert gases                      |
| Media temperature                                     | -10 °C ... 60 °C  |
| Ambient temperature                                   | -10 °C ... 60 °C  |
| Product weight  | 900 g   |
| Type of mounting                                      | Either:<br>In-line installation<br>With accessories                           |
| Pneumatic connection, port 1                          | G1/4  |
| Pneumatic connection, port 2                          | G1/4  |

| Feature          | Value         |
|------------------|---------------|
| Material housing | Die-cast zinc |
| Material bowl    | PC            |