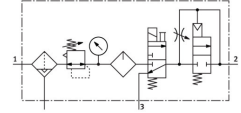


Service unit combination FRC-1/2-D-MIDI-KE-A

Part number: 185836

FESTO



General operating condition

Data sheet

Feature	Value
Size	Midi
Series	D
Actuator lock	Rotary knob with detent
Mounting position	Vertical +/-5°
Grade of filtration	40 µm
Condensate drain	Fully automatic
Design	On/off valve Filter regulator with pressure gauge Proportional standard mist lubricator Safety start-up valve
Max. condensate volume	43 ml
Bowl guard	Metal bowl guard
Symbol	00991564
Pressure gauge (ANALOG) or Pressure display (DIGITAL)	With pressure gauge
Operating pressure	0.3 MPa ... 1.2 MPa
Operating pressure	3 bar ... 12 bar
Operating pressure	43.5 psi ... 174 psi
Pressure regulation range	0.25 MPa ... 1.2 MPa
Pressure regulation range	2.5 bar ... 12 bar
Pressure regulation range	36.25 psi ... 174 psi
Max. pressure hysteresis	0.04 MPa
Max. pressure hysteresis	0.4 bar
Max. pressure hysteresis	5.8 psi
Standard nominal flow rate (standardised to DIN 1343)	1590 l/min
Operating medium	Compressed air to ISO 8573-1:2010 [-:-:-] Inert gases
Corrosion resistance class CRC	2 - Moderate corrosion stress
LABS (PWIS) conformity	VDMA24364-B1/B2-L
Air purity class at output	Compressed air to ISO 8573-1:2010 [7:4:-] Inert gases
Media temperature	-10 °C ... 60 °C
Ambient temperature	-10 °C ... 60 °C
Product weight	2800 g
Type of mounting	Either: In-line installation With accessories
Pneumatic connection, port 1	G1/2
Pneumatic connection, port 2	G1/2

Feature	Value
Material housing	Die-cast zinc
Material bowl	PC