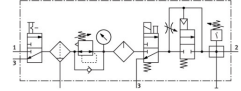
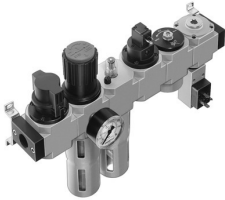


Service unit combination FRC-1/2-D-MAXI-KF

Part number: 186061

FESTO



[PDF](#) General operating condition

Data sheet

| Feature | Value |
|---|---|
| Size | Maxi |
| Series | D |
| Actuator lock | Rotary knob with detent |
| Mounting position | Vertical +/-5° |
| Grade of filtration | 40 µm |
| Condensate drain | Manually rotating |
| Design | Branching module Pressure switch On/off valve Filter regulator with pressure gauge Proportional standard mist lubricator Safety start-up valve |
| Max. condensate volume | 80 ml |
| Bowl guard | Metal bowl guard |
| Symbol | 00991763 |
| Pressure gauge (ANALOG) or Pressure display (DIGITAL) | With pressure gauge |
| Operating pressure | 0.3 MPa ... 1.6 MPa |
| Operating pressure | 3 bar ... 16 bar |
| Operating pressure | 43.5 psi ... 232 psi |
| Pressure regulation range | 0.25 MPa ... 1.2 MPa |
| Pressure regulation range | 2.5 bar ... 12 bar |
| Pressure regulation range | 36.25 psi ... 174 psi |
| Max. pressure hysteresis | 0.03 MPa |
| Max. pressure hysteresis | 0.3 bar |
| Max. pressure hysteresis | 4.35 psi |
| Standard nominal flow rate (standardised to DIN 1343) | 3400 l/min |
| Operating medium | Compressed air to ISO 8573-1:2010 [-:-:-] Inert gases |
| Corrosion resistance class CRC | 2 - Moderate corrosion stress |
| LABS (PWIS) conformity | VDMA24364-B1/B2-L |
| Air purity class at output | Compressed air to ISO 8573-1:2010 [7:4:-] Inert gases |
| Media temperature | -10 °C ... 60 °C |
| Ambient temperature | -10 °C ... 60 °C |
| Product weight | 6300 g |
| Type of mounting | Either: In-line installation With accessories |

| Feature | Value |
|------------------------------|---------------|
| Pneumatic connection, port 1 | G1/2 |
| Pneumatic connection, port 2 | G1/2 |
| Material housing | Die-cast zinc |
| Material bowl | PC |