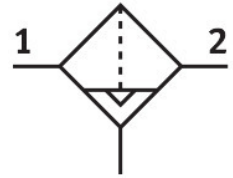


Micro filter LFMA-1/2-D-MAXI-A

Part number: 186475

FESTO



 General operating condition

Data sheet

Feature	Value
Series	D
Size	Maxi
Design	Fibre filter
Grade of filtration	0.01 µm
Condensate drain	Fully automatic
Symbol	00991520
Operating pressure	2 bar ... 12 bar
Operating medium	Compressed air to ISO 8573-1:2010 [6:8:4] Inert gases
Air purity class at output	Compressed air to ISO 8573-1:2010 [1:7:2] Inert gases
Max. standard flow rate for clean air class	1500 l/min
Min. standard flow rate for clean air class	500 l/min
Filter efficiency	99.9999 %
Bowl guard	Metal bowl guard
Corrosion resistance class CRC	2 - Moderate corrosion stress
LABS (PWIS) conformity	VDMA24364-B1/B2-L
Media temperature	1.5 °C ... 60 °C
Ambient temperature	-10 °C ... 60 °C
Residual oil content	0.01 mg/m ³
Type of mounting	Either: In-line installation With accessories
Mounting position	Vertical +/-5°
Pneumatic connection, port 1	G1/2
Pneumatic connection, port 2	G1/2
Material housing	Die-cast zinc
Material filter	Borosilicate fibre
Material bowl	PC
Note on materials	RoHS-compliant