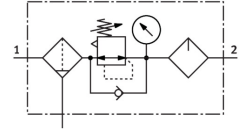


# Service unit FRC-1/2-D-MAXI

Part number: 186505

FESTO



## Data sheet

General operating condition

| Feature   | Value  |
|---|--|
| Size  | Maxi   |
| Series  | D  |
| Actuator lock   | Rotary knob with detent  |
| Mounting position                                     | Vertical +/-5°   |
| Condensate drain                                      | Manually rotating  |
| Design  | Filter regulator with pressure gauge<br>Proportional standard mist lubricator              |
| Max. condensate volume                                | 80 ml  |
| Grade of filtration                                   | 40 µm  |
| Bowl guard  | Metal bowl guard   |
| Symbol  | 00991761   |
| Pressure gauge (ANALOG) or Pressure display (DIGITAL) | With pressure gauge  |
| Operating pressure                                    | 0.1 MPa ... 1.6 MPa  |
| Operating pressure                                    | 1 bar ... 16 bar   |
| Pressure regulation range                             | 0.5 bar ... 12 bar   |
| Max. pressure hysteresis                              | 0.04 MPa   |
| Max. pressure hysteresis                              | 0.4 bar  |
| Max. pressure hysteresis                              | 5.8 psi  |
| Standard nominal flow rate (standardised to DIN 1343) | 7600 l/min   |
| Operating medium                                      | Compressed air to ISO 8573-1:2010 [-:9:-]<br>Inert gases                                   |
| Note on operating and pilot medium                    | Lubricated operation possible (in which case lubricated operation will always be required) |
| Corrosion resistance class CRC                        | 2 - Moderate corrosion stress  |
| LABS (PWIS) conformity                                | VDMA24364-B1/B2-L  |
| Air purity class at output                            | Compressed air to ISO 8573-1:2010 [7:8:-]<br>Inert gases                                   |
| Media temperature                                     | -10 °C ... 60 °C   |
| Ambient temperature                                   | -10 °C ... 60 °C   |
| Product weight  | 2390 g   |
| Type of mounting                                      | In-line installation<br>With accessories   |
| Pneumatic connection, port 1                          | G1/2   |
| Pneumatic connection, port 2                          | G1/2   |
| Note on materials                                     | RoHS-compliant   |
| Material housing                                      | Die-cast zinc  |
| Material bowl   | PC   |