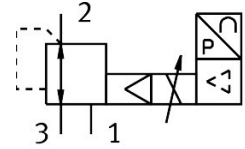


# Proportional-pressure regulator MPPE-3-1/4-6-010

Part number: 187337

FESTO



 [General operating condition](#)

## Data sheet

| Feature                                      | Value   |
|--|---|
| Nominal size, supply                         | 7 mm  |
| Nominal size, exhaust                        | 7 mm  |
| Type of actuation                            | Electric  |
| Sealing principle                            | Soft  |
| Mounting position                            | optional  |
| Design                                       | Piloted piston regulator  |
| Short circuit current rating                 | For all electrical connections  |
| Safety instructions                          | Safety position MPPE: if the power supply cable is interrupted, the output pressure drops to 0 bar. |
| Symbol                                       | 00995304  |
| Reverse polarity protection                  | For all electrical connections  |
| Valve function                               | 3-way proportional-pressure regulator, closed   |
| Operating pressure                           | ≤0.8 MPa  |
| Operating pressure                           | ≤8 bar  |
| Pressure regulation range                    | 0 MPa ... 0.6 MPa   |
| Pressure regulation range                    | 0 bar ... 6 bar   |
| Inlet pressure 1                             | 7 bar ... 8 bar   |
| Inlet pressure 1                             | 0.7 MPa ... 0.8 MPa   |
| Max. pressure hysteresis                     | 0.005 MPa   |
| Max. pressure hysteresis                     | 0.05 bar  |
| Switching time off                           | 640 ms  |
| Switching time on                            | 200 ms  |
| Operational voltage range DC                 | 18 V ... 30 V   |
| Nominal operating voltage DC                 | 24 V  |
| Residual ripple                              | 10 %  |
| SETPOINT/ACTUAL values                       | Voltage type 0 - 10 V   |
| Operating medium                             | Compressed air to ISO 8573-1:2010 [7:4:4]<br>Inert gases  |
| Note on operating and pilot medium           | Lubricated operation possible (in which case lubricated operation will always be required)          |
| Approval                                     | RCM trademark   |
| KC mark                                      | KC-EMV  |
| CE mark (see declaration of conformity)      | To EU EMC Directive<br>In accordance with EU RoHS Directive   |
| UKCA marking (see declaration of conformity) | To UK instructions for EMC<br>To UK RoHS instructions   |

| Feature                        | Value  |
|--------------------------------|--|
| Corrosion resistance class CRC | 2 - Moderate corrosion stress                              |
| LABS (PWIS) conformity         | VDMA24364-B2-L   |
| Media temperature              | 0 °C ... 60 °C   |
| Degree of protection           | IP65   |
| Ambient temperature            | 0 °C ... 50 °C   |
| Product weight                 | 1310 g   |
| Electrical connection          | 8-pin<br>M16x0.75<br>Plugs<br>To DIN 45326<br>Round design |
| Type of mounting               | With through-hole  |
| Pneumatic connection, port 1   | G1/4   |
| Pneumatic connection, port 2   | G1/4   |
| Pneumatic connection, port 3   | G1/4   |
| Note on materials              | RoHS-compliant   |
| Material housing               | Wrought aluminium alloy                                    |
| Material membrane              | NBR  |